

Rosários 4[®]

204

Kids Collection

OhLalaBaby Blanket



DESIGN:
ANA MORAIS SOARES
@ONESKEINOFLOVE

BIO LOVE

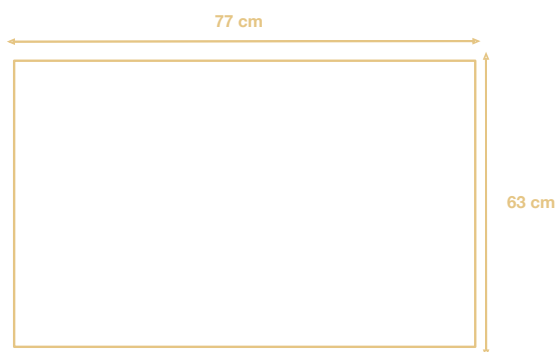


100% Organic
Cotton

OhLalaBaby Blanket

204

Kids Collection



YARN

4 balls of Rosários 4 Bio Love yarn, colour 01, off-white (50g/175m).

2 balls of Rosários 4 Bio Love yarn, colour 03, yellow (50g/175m).

2 balls of Rosários 4 Bio Love yarn, colour 11, blue (50g/175m).

NEEDLES

4mm hook (for the blanket centre) and a 3.5mm hook (for the border).

Needle to sew ends.

USED STITCHES (US TERMS)

Ch: chain

Sc: single crochet

Hdc: half double crochet

Dc: double crochet

Dc2tog: double crochet 2 together. Yarn over, insert hook in the indicated stitch, yarn over, pull up a loop. Yarn over, pull through 2 loops. Yarn over, insert in same stitch. Yarn over, pull up a loop. Yarn over, pull through 2 loops. Yarn over, pull through all 3 loops on your hook.

Crossed stitch: work a dc, dc in the stitch immediately before. Skip one stitch, dc in the next stitch, dc in the skipped stitch

Picot: work 3 ch, insert hook in the middle of the sc stitch picking both side loops, yarn over, sl st.

Principal stitch used in the central body of the blanket: work in multiples of 3 (see diagram).

BLANKET PATTERN

Colour A: off-white

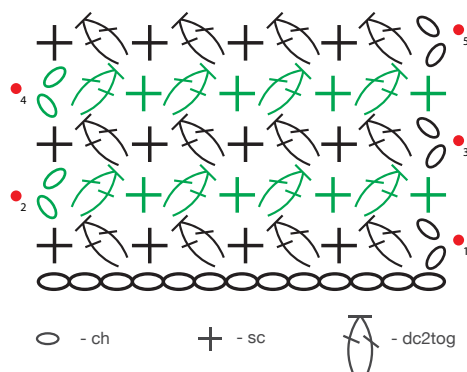
Colour B: yellow

Colour C: blue

1. CENTRAL BODY (COLOUR A)

Row 1: with the 4mm hook ch 89. In the 3rd ch work a dc2tog. Skip next 2 ch. *Sc and dc2tog in the next ch. Skip next 2 ch.** Repeat from * to **. In the last ch work a sc.

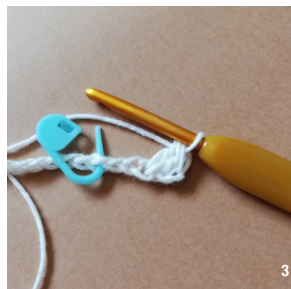
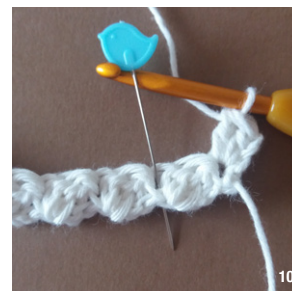
Diagram



Row 2: ch2 and dc2tog in the first st (the last sc from row 1). *Skip the dc2tog from row 1 and in the next stitch (the sc from row 1) work 1 sc and a dc2tog.** Repeat from * to **. End with a sc in the top of the ch2 of the beginning of row 1.

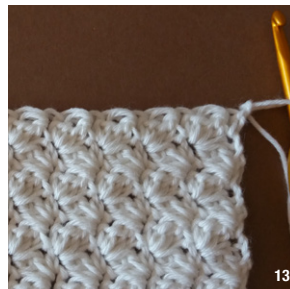
Work 78 rows with the main stitch.

You can change the size of your blanket adding or decreasing chains. Remember you will always need a ch with multiples of 3.



2. BIG BORDER

Row 1: (colour A) ch1, 1 sc in same place. Work a sc in every sc and 2 sc in every dc2tog. In the last stitch work 3 sc to make your first corner. Keep working sc in all other sides and 3 sc in each corner. Make 2 sc in the place where you made your 1st sc and join with a sl st. Cut yarn and sew ends. You must have 86 sc on the smaller sides, between the 3sc of each corner, and 116 sc on the longer sides, between the 3 sc of each corner. [4 x 3 sc/corner, 86 sc on smaller sides, 116 sc on longer sides]



13



TOP

14



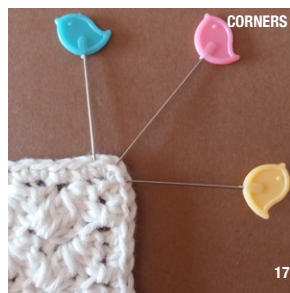
SIDES

15



BASE

16



CORNERS

17

Row 2: (colour C) start with 3 sc in the middle sc of any corner. *Sc in every stitch across, 3 sc in every corner.** Repeat from * to ** omitting last 3 sc in central corner stitch. Sl St to the first sc. Cut yarn and sew ends. [4 x 3 sc/corner, 88 sc on smaller sides, 118 sc on longer sides] (picture 18)

Row 3: (colour B) work in blo. Start with *3 sc in the central stitch of any corner. Sc in all other stitches.** Repeat from * to ** 3 more times. Cut yarn and sew ends. [4 x 3 sc/corner, 90 sc on smaller sides, 120 sc on longer sides] (picture 19)



18



19



PURE NEW WOOL



ISO 9001

40
ANOS

Row 4: (colour C) work in blo. Start with *3 sc in the central stitch of any corner. Sc in all other stitches.** Repeat from * to **. Cut yarn and sew ends. [4 x 3 sc/corner, 92 sc on smaller sides, 122 sc on longer sides] (picture 20)

Row 5: (colour B) start in the central stitch of any corner with (2 hdc, ch2, 2 hdc). *Hdc in all next stitches. (2 hdc, ch2, 2 hdc) in next central corner stitch.** Repeat from * to ** omitting last (2 hdc, ch2, 2 hdc) corner stitches. Cut yarn and sew ends. [4 x (2 hdc, ch2, 2 hdc)/corner, 94 hdc on smaller sides, 124 hdc on longer sides] (picture 21)



Row 10: (colour B) start in any ch2 corner space with 1sc, ch2, 1 sc (new corner). *Skip first stitch and work sc in all next stitches, (1sc, ch2, 1 sc) in next ch2 corner space.** Repeat from * to ** omitting last (1 sc, ch2, 1 sc). Cut yarn and sew ends. [4 x (1 sc, ch2, 1 sc)/corner, 110 sc on smaller sides, 140 sc on longer sides] (picture 26)

Row 11: (colour B) start in any ch2 corner space with (2 dc, ch2, 2 dc). *Ch1, skip 1 stitch. [1 dc in next 2 stitches, ch1, skip one stitch] repeat until you reach next corner. (2 dc, ch2, 2dc) in next ch2 corner space.** Repeat from * to ** omitting last (2 dc, ch2, 2 dc) corner stitches. Cut yarn and sew ends. [4 x (2 dc, ch2, 2 dc) / corner, 74 dc and 38 ch on smaller sides, 94 dc and 48 ch on longer sides] (picture 27)



Row 6: (colour C) start in any ch2 corner space with (2 dc, ch2, 2 dc). *Skip the 1st stitch (it is a little bit hidden) and the 2nd stitch. Dc in 3rd stitch and dc in the skipped stitch immediately before. [Skip next stitch. Dc in next stitch, dc in the skipped stitch - crossed stitch], repeat until the next corner, skipping the last stitch before the ch2 corner. (2 dc, ch2, 2 dc) in ch2 corner.** Repeat from * to ** omitting last (2 dc, ch2, 2 dc). Cut yarn and sew ends. [4 x (2 dc, ch2, 2 dc)/corner, 96 dc on smaller sides (48 crossed stitches), 126 dc on longer sides (63 crossed stitches)] (picture 22)

Row 7: (colour B) start in any ch2 corner space with 2 hdc, ch2, 2 hdc (new corner). *Hdc in all next stitches, (2 hdc, ch2, 2 hdc) in next ch2 corner.** Repeat from * to ** omitting the last (2 hdc, ch2, 2 hdc) corner stitches. Cut yarn and sew ends. [4 x (2 hdc, ch2, 2 hdc)/corner, 100 hdc on smaller sides, 130 hdc on longer sides] (picture 23)



Row 12: (colour C) start in any ch2 corner space with 1sc, ch2, 1 sc (new corner). *Sc in all next stitches (work 1 sc in all ch1 spaces), (1sc, ch2, 1 sc) in next ch2 corner space.** Repeat from * to ** omitting last (1 sc, ch2, 1 sc) corner stitches. Cut yarn and sew ends. [4x(1 sc, ch2, 1 sc)/corner, 116 sc on smaller sides, 146 sc on longer sides] (picture 28)

Row 13: (colour C) start in any ch2 corner space with (2 dc, ch2, 2 dc). *Ch1, skip 1 stitch. [1 dc in next 2 stitches, ch1, skip one stitch] repeat until you reach next corner. (2 dc, ch2, 2dc) in next ch2 corner space.** Repeat from * to ** omitting last (2 dc, ch2, 2 dc) corner stitches. Cut yarn and sew ends. [4 x (2 dc, ch2, 2 dc)/corner, 78 dc and 40 ch on smaller sides, 98 dc and 50 ch on longer sides][4 x (2 pa, 2 corr; 2 pa)/canto, 78 pa e 40 corr no topo e na base, 98 pa e 50 corr nas laterais] (picture 29)



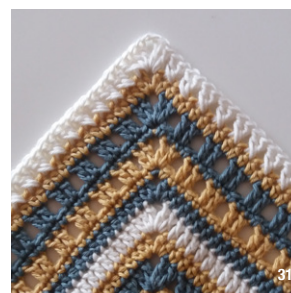
Row 8: (colour A) start in any ch2 corner space with 2 dc, ch2, 2 dc (new corner). *Dc in all next stitches, (2 dc, ch2, 2 dc) in next ch2 corner.** Repeat from * to ** omitting the last (2 dc, ch2, 2 dc) corner stitches. Cut yarn and sew ends. [4 x (2 dc, ch2, 2 dc)/corner, 104 dc on smaller sides, 134 dc on longer sides] (picture 24)

Row 9: (colour C) start in any ch2 corner space with 2 hdc, ch2, 2 hdc (new corner). *Skip next stitch (it is a little bit hidden), hdc in all next stitches, (2 hdc, ch2, 2 hdc) in next ch2 corner.** Repeat from * to ** omitting the last (2 hdc, ch2, 2 hdc) corner stitches. Cut yarn and sew ends. [4 x (2 hdc, ch2, 2 hdc)/corner, 107 hdc on smaller sides, 137 hdc on longer sides] (picture 25)



Row 14: (colour B) start in any ch2 corner space with 2 hdc, ch2, 2 hdc (new corner). *Hdc in all next stitches (work a hdc in every ch1 space), (2 hdc, ch2, 2 hdc) in next ch2 corner.** Repeat from * to ** omitting the last (2 hdc, ch2, 2 hdc) corner stitches. Cut yarn and sew ends. [4 x (2 hdc, ch2, 2 hdc)/corner, 122 hdc on smaller sides, 152 hdc on longer sides] (picture 30)

Row 15: (colour A) start in any ch2 corner space with (2 dc, ch2, 2 dc). Skip the 1st stitch (is a little bit hidden), dc in 2nd stitch and dc in the skipped stitch immediately before. [Skip next stitch, dc in the skipped stitch - crossed stitch], repeat until the next corner. (2 dc, ch2, 2 dc) in ch2 corner.** Repeat from * to ** omitting last (2 dc, ch2, 2 dc). Cut yarn and sew ends. [4 x (2 dc, ch2, 2 dc)/corner, 126 dc on smaller sides (63 crossed stitches), 156 dc on longer sides (78 crossed stitches)] (picture 31)



Row 16: (colour B) start in any ch2 corner space with 2 hdc, ch2, 2 hdc (new corner). *Skip 1st stitch, hdc in all next stitches, (2 hdc, ch2, 2 hdc) in next ch2 corner.** Repeat from * to ** omitting the last (2 hdc, ch2, 2 hdc) corner stitches. Cut yarn and sew ends. [4 x (2 hdc, ch2, 2 hdc)/corner, 129 hdc on smaller sides, 159 hdc on longer sides] (picture 32)

Row 17: (colour C) start in any ch2 corner space with 2 dc, ch2, 2 dc (new corner). *Skip 1st stitch, dc in all next stitches, (2 dc, ch2, 2 dc) in next ch2 corner.** Repeat from * to ** omitting the last (2 dc, ch2, 2 dc) corner stitches. Cut yarn and sew ends. [4 x (2 dc, ch2, 2 dc)/corner, 132 dc on smaller sides, 162 dc on longer sides] (picture 33)



Row 18: (colour B) start in any ch2 corner space with 2 sc, ch2, 1 sc (new corner. Pay attention that corners are not symmetric in this row). *Sc in all next stitches, (2 sc, ch2, 1 sc) in next ch2 corner.** Repeat from * to ** omitting the last (2 sc, ch2, 1 sc) corner stitches. Cut yarn and sew ends. [4 x (2 sc, ch2, 1 sc)/corner, 136 sc on smaller sides, 166 sc on longer sides] (picture 34)

Row 19: (colour B) start in any ch2 corner space with 2 hdc, ch2, 2 hdc (new corner). *Ch1, skip next stitch. [1 hdc in next stitch, ch1, skip next stitch], repeat until you reach next corner. (2 hdc, ch2, 2 hdc) in next ch2 corner.** Repeat from * to ** omitting the last (2 hdc, ch2, 2 hdc) corner stitches. Cut yarn and sew ends. [4 x (2 hdc, ch2, 2 hdc)/corner, 69 hdc and 70 ch on smaller sides, 84 hdc and 85 ch on longer sides] (picture 35)



PURE NEW WOOL



ISO 9001

40
ANOS

Rua das Grutas, 13 - Apartado 123 2485-059 Mira de Aire - Portugal
Tel. +351 244 447 300 Fax +351 244 447 309
info@rosarios4.com www.rosarios4.com

Row 20: (colour C) work sc in all hdc from last row and dc in all skipped stitches. These dc are worked in front of ch1 spaces. Start in any ch2 corner space with 1 sc, ch2, 1 sc. *Sc in next 2 stitches. [1 dc in the skipped stitch from last row, 1 sc in the next stitch] repeat till you have only one stitch left before ch2 corner. Work a sc in that last stitch. (1 sc, ch2, 1 sc) in next ch2 corner space.** Repeat from * to ** omitting last (1 sc, ch2, 1 sc) corner stitches. [4 x (1 sc, ch2, 1 sc)/corner, 70 dc and 73 sc on smaller sides, 85 dc and 88 sc on longer sides] (picture 36)

Row 21: (colour B) start in any ch2 corner space with 1sc, ch2, 1 sc (new corner). *Skip first stitch and work sc in all next stitches, (1sc, ch2, 1 sc) in next ch2 corner space.** Repeat from * to ** omitting last (1 sc, ch2, 1 sc) corner stitches. Cut yarn and sew ends. [4 x (1 sc, ch2, 1 sc)/corner, 144 sc on smaller sides, 174 sc on longer sides] (picture 37)



Row 22: (colour A) start in any ch2 corner space with 2 hdc, ch2, 2 hdc (new corner). *Skip first stitch and work hdc in all next stitches, (2 hdc, ch2, 2 hdc) in next ch2 corner space.** Repeat from * to ** omitting last (2 hdc, ch2, 2 hdc) corner stitches. Cut yarn and sew ends. [4 x (2 hdc, ch2, 2 hdc)/corner, 145 hdc on smaller sides, 175 hdc on longer sides] (picture 38)

Row 23: (colour B) start in any ch2 corner space with 1sc, ch2, 1 sc (new corner). *Skip first stitch and work sc in all next stitches, (1sc, ch2, 1 sc) in next ch2 corner space.** Repeat from * to ** omitting last (1 sc, ch2, 1 sc) corner stitches. Cut yarn and sew ends. [4 x (1 sc, ch2, 1 sc)/corner, 148 sc on smaller sides, 178 sc on longer sides] (picture 39)



Row 24: (colour C) start in any ch2 corner space with 1sc, ch3, 1 sc (new corner). Ch3, skip 3 stitches (only in the beginning of every side). [1 sc in next stitch, ch2, skip 2 stitches], repeat until the next corner. (1 sc, ch3, 1 sc) in next ch2 corner space.** Repeat from to ** omitting last (1 sc, ch3, 1 sc) corner stitches. Cut yarn and sew ends. [4 x (1 sc, ch3, 1 sc) / corner, 49 sc, 1 x ch3, 49 x ch2 on smaller sides, 59 sc, 1 x ch3, 59 x ch2 on longer sides] (picture 40)

Row 25: (colour C) start in any ch3 corner space with 2 sc, 1 picot, 2 sc. Skip next sc and work (2sc, 1 picot, 1 sc) in next ch3 space, skip next sc. [Work (2sc, 1 picot, 1 sc) in next ch2 space, skip next sc] repeating this until you reach next corner. (2 sc, 1 picot, 2 sc) in next ch3 corner space.** Repeat from to ** omitting last (2 sc, 1 picot, 2 sc) corner stitches. [4 x (2 sc, picot, 2 sc) / corner, 150 sc and 50 picots on smaller sides, 180 sc and 60 picots on longer sides] (picture 41)



Photos of the instructions: Ana Morais Soares.



40
ANOS

Rua das Grutas, 13 - Apartado 123 2485-059 Mira de Aire - Portugal
Tel. +351 244 447 300 Fax +351 244 447 309
info@rosarios4.com www.rosarios4.com

BIO LOVE

(100% Organic Cotton)

Bio Love is an organic cotton yarn, GOTS certified. It is part of Rosários 4 Kids Collection, but it's already one of Rosários 4 favourite yarns – not only for baby garments, but also for the whole family. Its softness and lightness are surprising, making it the perfect choice to create this irresistible baby blanket.



Color 11