

# Rosários 4<sup>®</sup>

203

Primavera . Verano  
Spring . Summer

**Chal Bailarico**  
Bailarico Shawl

CREADO Y TEJIDO POR  
CREATED AND KNITTED BY  
**FILIPA CARNEIRO**

FOTOGRAFIADO EN  
PHOTOGRAPHED AT  
[WWW.RETIRODOBOSQUE.COM](http://WWW.RETIRODOBOSQUE.COM)

BIO LOVE

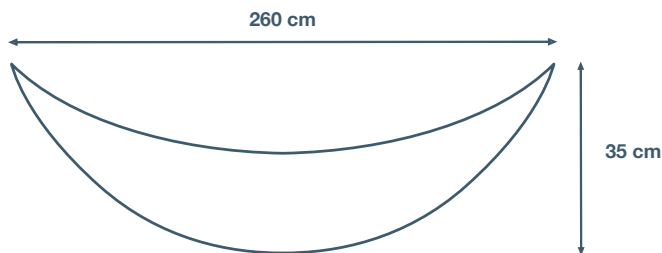


100% Algodão  
Orgânico

100% Organic  
Cotton

# Chal Balarico

## Balarico Shawl



### TENSIÓN

19 pts y 32 vtas - 10x10 cm en punto jersey con aguja 3 mm.

### HILO

2 ovillos de Bio Love de Rosários 4, en el color 12 (50g/175m).  
1 ovillo de Bio Love de Rosários 4, en el color 14 (50g/175m).  
1 ovillo de Bio Love de Rosários 4, en el color 15 (50g/175m).  
2 ovillos de Bio Love de Rosários 4, en el color 16 (50g/175m).

### AGUJAS

Agujas circulares de 3,0 mm.

### TALLA

Única.

### MEDIDAS

260 cm de largo y 35 cm de ancho en el centro.

### INSTRUCCIONES

Con el color 12 montar 28 pts y tejer 1 vta del Revés. Empezar a tejer en el punto de lazadas:

**Vta 1 (DL):** 1D, laz, A3, \*2D, 2Dj, laz, repetir desde \* hasta últimos 2 pts, A3, laz, 1D. [+6pts]

**Vta 2 (RL):** revés.

**Vta 3:** 1D, laz, A3, D hasta últimos 2 pts, A3, laz, 1D. [+6pts]

**Vta 4:** revés.

**Vta 5:** 1D, laz, A3, 2D, \*2Dj, laz, 2D, repetir desde \* hasta últimos 4 pts, 2D, A3, laz, 1D. [+6pts]

**Vta 6:** revés.

**Vta 7:** 1D, laz, A3, D hasta últimos 2 pts, A3, laz, 1D. [+6pts]

**Vta 8:** revés.

Repetir las vtas 1 - 8, 5 veces más. [172 pts]

Cortar el hilo del color 12, **unir el hilo de color 14** y empezar a tejer las hojas en vtas cortas. Seguir los gráficos A y B o la instrucción escrita siguiente:

**Vta 1 (DL):** 1D, laz, A3, 14D, girar.

**Vta 2 (RL):** PD, 1D, 10R, 2D, 5R.

**Vta 3:** 1D, laz, A3, 3D, 2R, laz, 1D, laz, DD, 6D, 2R, 6D, girar.

**Vta 4:** PD, 5R, 2D, 10R, 2D, 8R.

**Vta 5:** 1D, laz, A3, 6D, 2R, (1D, laz) x 2, 1D, DD, 4D, 2R, 12D, girar.

**Vta 6:** PD, 1D, (10R, 2D) x 2, 11R.

**Vta 7:** 1D, laz, A3, 1D, (laz, 1D, laz, 2D, DD, 2D, L2, 2D) x 2, laz, 1D, laz, 2D, DD, 2D, L2, 6D, girar.

**Vta 8:** PD, 5R, (2D, 10R) x 3, 2D, 2R.

**Vta 9:** 1D, laz, A3, (2R, 3D, laz, 1D, laz, 3D, DD) x 4, 2D, girar.

**Vta 10:** PD, 1D, (10R, 2D) x 4, 5R.

**Vta 11:** 1D, laz, A3, 3D, (2R, 10D) x 4, 2R, 6D, girar.

**Vta 12:** PD, 5R, (2D, 10R) x 4, 2D, 8R.

**Vta 13:** 1D, laz, A3, 2D, (3Dj, laz, 1D, laz, 2R, 6D) x 4, 3Dj, laz, 1D, laz, L2, 12D, girar.

### GAUGE

19 sts e 32 rows: 10x10 cm in stockinette stitch with 3 mm needle.

### YARN

2 balls of Rosários 4 Bio Love yarn, colour 12 (50g/175m).  
1 ball of Rosários 4 Bio Love yarn, colour 14 (50g/175m).  
1 ball of Rosários 4 Bio Love yarn, colour 15 (50g/175m).  
2 balls of Rosários 4 Bio Love yarn, colour 16 (50g/175m).

### NEEDLES

Circular needles 3,0 mm.

### SIZE

One size.

### MEASUREMENTS

260 cm width and 35 cm depth in the centre.

### INSTRUCTIONS

With colour 12 cast on 28 sts and purl 1 row. Start working in the eyelets stitch pattern:

**Row 1 (RS):** K1, yo, M3, \*K2, K2tog, yo\* repeat from \*to\* until last 2 sts, M3, yo, K1. [+6sts]

**Carr 2 (WS):** P to end.

**Carr 3:** K1, yo, M3, K to last 2 sts, M3, yo, K1. [+ 6 sts]

**Carr 4:** P to end.

**Carr 5:** K1, yo, M3, K2, \*K2tog, yo, K2\* repeat from \* to \* until last 4 sts, K2, M3, yo, K1. [8 + 6 sts]

**Carr 6:** P to end.

**Carr 7:** K1, yo, M3, K to last 2 sts, M3, yo, K1. [+ 6 sts]

**Carr 8:** P to end.

Repeat rows 1 - 8, 5 more times. [172 sts]

Cut colour 12 yarn, **join colour 14** and work the short rows that form the leaves. Follow this written instruction or the charts A and B:

**Row 1 (RS):** K, yo, M3, K14, turn.

**Row 2 (WS):** DS, K, P10, K2, P5.

**Row 3:** K1, yo, M3, K3, P2, yo, K1, yo, sssk, K6, P2, K6, turn.

**Row 4:** DS, P5, K2, P10, K2, P8.

**Row 5:** K1, yo, M3, K6, P2, (K1, yo) x 2, K1, sssk, K4, P2, K12, turn.

**Row 6:** DS, K, (P10, K2) x 2, P11.

**Row 7:** K1, yo, M3, K1, (yo, K1, yo, K2, sssk, K2, P2, K2) x 2, yo, K1, yo, K2, sssk, K2, P2, K6, turn.

**Row 8:** DS, P5, (K2, P10) x 3, K2, P2.

**Row 9:** K1, yo, M3, (P2, K3, yo, K1, yo, K3, sssk) x 4, K2, turn.

**Row 10:** DS, K1, (P10, K2) x 4, P5.

**Row 11:** K1, yo, M3, K3, (P2, K10) x 4, P2, K6, turn.

**Row 12:** DS, P5, (K2, P10) x 4, K2, P8.

**Row 13:** K1, yo, M3, K2, (K3tog, yo, K1, yo, P2, K6) x 4, K3tog, yo, K1, yo, P2, K12, turn.

# 203

Primavera . Verano  
Spring . Summer



PURE NEW WOOL



ISO 9001

40  
ANOS

Rua das Grúas, 13 - Apartado 123 2485-059 Mira de Aire - Portugal  
Tel. +351 244 447 300 Fax +351 244 447 309  
info@rosarios4.com www.rosarios4.com

203

Primavera . Verano  
Spring . Summer**Vta 14:** PD, 1D, (10R, 2D) x 5, 11R.**Vta 15:** 1D, laz, A3, 3D, (3Dj), (1D, laz) x 2, 1D, 2R, 4D) x 5, 3Dj, (1D, laz) x 2, 1D, 2R, 6D, girar.**Vta 16:** PD, 5R, (2D, 10R) x 6, 2D, 2R.**Vta 17:** 1D, laz, A3, (2R, 2D, 3Dj), 2D, laz, 1D, laz, 2D) x 6, 2R, 2D, 3Dj, 2D, laz, 1D, laz, 4D, girar.**Vta 18:** PD, 1D, (10R, 2D) x 7, 5R.**Vta 19:** 1D, laz, A3, (3D, 2R, 3Dj), 3D, laz, 1D, laz) x 7, 3D, 2R, 6D, girar.**Vta 20:** PD, 5R, (2D, 10R) x 7, 2D, 8R.**Vta 21:** 1D, laz, A3, 6D, (2R, 10D) x 8, 2D, girar.**Vta 22:** PD, 1D, (10R, 2D) x 8, 11R.**Vta 23:** 1D, laz, A3, 9D, (2R, laz, 1D, laz, DD, 6D) x 8, 2R, laz, 1D, laz, DD, 2D, girar.**Vta 24:** PD, 5R, 2D, (10R, 2D) x 8, 10R, 2D, 2R.**Vta 25:** 1D, laz, A3, 2R, (1D, laz) x 2, 1D, DD, 4D, [2R, (1D, laz) x 2, 1D, DD, 4D] x 8, 2R, 12D, girar.**Vta 26:** PD, 1D, 10R, 2D, (10R, 2D) x 8, 10R, 2D, 5R.**Vta 27:** 1D, laz, A3, 3D, 2R, 2D, laz, 1D, laz, 2D, DD, 2D, (2R, 2D, laz, 1D, laz, 2D, DD, 2D) x 8, 2R, 2D, laz, 1D, laz, 2D, DD, 2D, 2R, 6D, girar.**Vta 28:** PD, 5R, 2D, 10R, 2D, (10R, 2D) x 8, 10R, 2D, 8R.**Vta 29:** 1D, laz, A3, 6D, 2R, 3D, laz, 1D, laz, 3D, DD, (2R, 3D, laz, 1D, laz, 3D, DD) x 8, (2R, 3D, laz, 1D, laz, 3D, DD) x 2, 2D, girar.**Vta 30:** PD, 1D, (10R, 2D) x 2, (10R, 2D) x 8, 10R, 2D, 11R.**Vta 31:** 1D, laz, A3, 9D, 2R, 10D, (2R, 10D) x 8, (2R, 10D) x 2, 2R, 6D, girar.**Vta 32:** PD, 5R, (2D, 10R) x 2, 2D, (10R, 2D) x 8, (10R, 2D) x 2, 2R.**Vta 33:** 1D, laz, A3, (2R, 6D, 3Dj), laz, 1D, laz) x 2, (2R, 6D, 3Dj), laz, 1D, laz) x 8, (2R, 6D, 3Dj), laz, 1D, laz) x 2, 2R, 12D, girar.**Vta 34:** PD, 1D, (10R, 2D) x 3, (10R, 2D) x 8, (10R, 2D) x 2, 5R.**Vta 35:** 1D, laz, A3, 3D, [2R, 4D, 3Dj], (1D, laz) x 2, 1D] x 2, [2R, 4D, 3Dj], (1D, laz) x 2, M] x 8, [2R, 4D, 3Dj], (1D, laz) x 2, M] x 3, 2R, 5M, girar.**Vta 36:** PD, 4L, (2D, 10R) x 3, 2D, (10R, 2D) x 8, (10R, 2D) x 2, L8.**Vta 37:** 1D, laz, A3, 6D, (2R, 2D, 3Dj), 2D, laz, 1D, laz, 2D) x 2, (2R, 2D, 3Dj), 2D, laz, 1D, laz, 2D) x 8, (2R, 2D, 3Dj), 2D, laz, 1D, laz, 2D) x 3, 2R, 2D, 3Dj, 2D, laz, 1D, laz, M4, girar.**Vta 38:** PD, 1D, (10R, 2D) x 4, (10R, 2D) x 8, (10R, 2D) x 2, 11R.**Vta 39:** 1D, laz, A3, 9D, (2R, 3Dj), 3D, laz, 1D, laz, 3D) x 2, (2R, 3Dj), 3D, laz, 1D, laz, 3D) x 8, (2R, 3Dj), 3D, laz, 1D, laz, 3D) x 4, 2R, 6D, girar.**Vta 40:** PD, 5R, (2D, 10R) x 4, 2D, (10R, 2D) x 8, (10R, 2D) x 3, 2R.Quedan 232 pts en la aguja. Cortar el hilo del color 14, **unir el hilo de color 12** y tejer en punto de lazadas:**Vta 1 (DL):** 1D, laz, A3, \*2D, 2Dj, laz, repetir desde \* hasta últimos 2 pts (los puntos dobles se tejen como puntos simples, tejiendo las 2 hebras juntas), A3, laz, 1D.**Vta 2 (RL):** revés.**Vta 3:** 1D, laz, A3, D hasta últimos 2 pts, A3, laz, 1D.**Vta 4:** revés.**Vta 5 (LD):** 1D, laz, A3, 2D, \*2Dj, laz, 2D, repetir desde \* hasta últimos 4 pts, 2D, A3, laz, 1D.**Vta 6 (LA):** revés.**Vta 7:** 1D, laz, A3, D hasta últimos 2 pts, A3, laz, 1D.**Vta 8:** revés.

Repetir las vta 1 - 8, 2 veces más. [304 pts]

**Row 14:** DS, K1, (P10, K2) x 5, P11.**Row 15:** K1, yo, M3, K3, [K3tog, (K1, yo) x 2, K1, P2, K4] x 5, K3tog, (K1, yo) x 2, K1, P2, K6, turn.**Row 16:** DS, P5, (K2, P10) x 6, K2, P2.**Row 17:** K1, yo, M3, (P2, K2, k3tog, K2, yo, K1, yo, K2) x 6, P2, K2, K3tog, K2, yo, K1, yo, K4, turn.**Row 18:** DS, K1, (P10, K2) x 7, P5.**Row 19:** K1, yo, M3, (K3, P2, K3tog, K3, yo, K1, yo) x 7, K3, P2, K6, turn.**Row 20:** DS, P5, (K2, P10) x 7, K2, P8.**Row 21:** K, yo, M3, K6, (P2, K10) x 8, K2, turn.**Row 22:** DS, K, (P10, K2) x 8, P11.**Row 23:** K, yo, M3, K9, (P2, yo, K, yo, sssk, K6) x 8, P2, yo, K, yo, sssk, K2, turn.**Row 24:** DS, P5, K2, (P10, K2) x 8, P10, K2, P2.**Row 25:** K, yo, M3, P2, (K, yo) x 2, K, sssk, K4, (P2, (K, yo) x 2, K, sssk, K4) x 8, P2, K12, turn.**Row 26:** DS, K, P10, K2, (P10, K2) x 8, P10, K2, P5.**Row 27:** K, yo, M3, K3, P2, K2, yo, K, yo, K2, sssk, K2, (P2, K2, yo, K, yo, K2, sssk, K2) x 8, P2, K2, yo, K, yo, K2, sssk, K2, P2, K6, turn.**Row 28:** DS, P5, K2, P10, K2, (P10, K2) x 8, P10, K2, P8.**Row 29:** K, yo, M3, K6, P2, K3, yo, K, yo, K3, sssk, (P2, K3, yo, K, yo, K3, sssk) x 8, (P2, K3, yo, K, yo, K3, sssk) x 2, K2, turn.**Row 30:** DS, K, (P10, K2) x 2, (P10, K2) x 8, P10, K2, P11.**Row 31:** K, yo, M3, K9, P2, K10, (P2, K10) x 8, (P2, K10) x 2, P2, K6, turn.**Row 32:** DS, P5, (K2, P10) x 2, K2, (P10, K2) x 8, (P10, K2) x 2, P2.**Row 33:** K, yo, M3, (P2, K6, K3tog, yo, K, yo) x 2, (P2, K6, K3tog, yo, K, yo) x 8, (P2, K6, K3tog, yo, K, yo) x 2, P2, K12, turn.**Row 34:** DS, K, (P10, K2) x 3, (P10, K2) x 8, (P10, K2) x 2, P5.**Row 35:** K, yo, M3, K3, (P2, K4, K3tog, (K, yo) x 2, K) x 2, (P2, K4, K3tog, (K, yo) x 2, K) x 8, (P2, K4, K3tog, (K, yo) x 2, K) x 3, P2, K5, turn.**Row 36:** DS, P4, (K2, P10) x 3, K2, (P10, K2) x 8, (P10, K2) x 2, P8.**Row 37:** K, yo, M3, K6, (P2, K2, K3tog, K2, yo, K, yo, K2) x 2, (P2, K2, K3tog, K2, yo, K, yo, K2) x 8, (P2, K2, K3tog, K2, yo, K, yo, K2) x 3, P2, K2, K3tog, K2, yo, K, yo, K4, turn.**Row 38:** DS, K, (P10, K2) x 4, (P10, K2) x 8, (P10, K2) x 2, P11.**Row 39:** K, yo, M3, K9, (P2, K3tog, K3, yo, K, yo, K3) x 2, (P2, K3tog, K3, yo, K, yo, K3) x 8, (P2, K3tog, K3, yo, K, yo, K3) x 4, P2, K6, turn.**Row 40:** DS, P5, (K2, P10) x 4, K2, (P10, K2) x 8, (P10, K2) x 3, P2.You should have 232 sts on the needles. Cut colour 14 yarn, **join colour 12** again and work the eyelets stitch pattern:**Row 1 (RS):** K1, yo, M3, \*K2, K2tog, yo\* repeat from \* to \* until last 2 sts (be careful to knit the DS as a single st, knitting both legs of the DS together), M3, yo, K1.**Row 2 (WS):** P to end.**Carr 3:** K1, yo, M3, K to last 2 sts, M3, yo, K1.**Carr 4:** P to end.**Carr 5:** K1, yo, M3, K2, \*k2tog, yo, K2\* repeat from \* to \* until last 4 sts, K2, M3, yo, K1.**Carr 6:** P to end.**Carr 7:** K1, yo, M3, K to last 2 sts, M3, yo, K1.**Carr 8:** P to end.

Repeat rows 1 - 8, 2 more times. [304 ms]

40  
ANOS

203

Primavera . Verano  
Spring . Summer

Cortar el hilo del color 12, **unir el hilo de color 15** y tejer las hojas en vtas cortas. **Tejer las vtas 1 - 40 (gráficos A y B)** como para el color 14; seguidamente, tejer el gráfico C o la instrucción escrita siguiente:

**Vta 41 (DL):** 1D, laz, A3, (2R, 10D) x 16, 2D, girar.

**Vta 42 (RL):** PD, 1D, (10R, 2D) x 16, 5R.

**Vta 43:** 1D, laz, A3, 3D, (2R, laz, 1D, laz, DD, 6D) x 16, 2R, 6D, girar.

**Vta 44:** PD, 5R, 2D, (10R, 2D) x 16, 8R.

**Vta 45:** 1D, laz, A3, 6D, [2R, (1D, laz) x 2, 1D, DD, 4D] x 16, 2R, 12D, girar.

**Vta 46:** PD, 1D, 10R, 2D, (10R, 2D) x 16, 11R.

**Vta 47:** 1D, laz, A3, (1D, laz) x 2, 2D, DD, 2D, (2R, 2D, laz, 1D, laz, 2D, DD, 2D) x 16, 2R, 2D, laz, 1D, laz, 2D, DD, 2D, 2R, 6D, girar.

**Vta 48:** PD, 5R, 2D, 10R, 2D, (10R, 2D) x 16, 10R, 2D, 2R.

**Vta 49:** 1D, laz, A3, 2R, 3D, laz, 1D, laz, 3D, DD, (2R, 3D, laz, 1D, laz, 3D, DD) x 16, 2R, 3D, laz, 1D, laz, 3D, DD, 2R, 12D, girar.

**Vta 50:** PD, 1D, (10R, 2D) x 2, (10R, 2D) x 16, 10R, 2D, 5R.

**Vta 51:** 1D, laz, A3, 3D, (2R, 10D) x 19, 2R, 6D, girar.

**Vta 52:** PD, 5R, 2D, (10R, 2D) x 19, 8R.

**Vta 53:** 1D, laz, A3, 2D, 3Dj, laz, 1D, laz, (2R, 6D, 3Dj, laz, 1D, laz) x 19, 2R, 12D, girar.

**Vta 54:** PD, 1D, 10R, 2D, (10R, 2D) x 19, 11R.

**Vta 55:** 1D, laz, A3, 3D, 3Dj, (1D, laz) x 2, 1D, [2R, 4D, 3Dj], (1D, laz) x 2, 1D] x 19, 2R, 4D, 3Dj, (1D, laz) x 2, 1D, 2R, 6D, girar.

**Vta 56:** PD, 5R, 2D, 10R, 2D, (10R, 2D) x 19, 10R, 2D, 2R.

**Vta 57:** 1D, laz, A3, 2R, 2D, 3Dj, 2D, laz, 1D, laz, 2D, (2R, 2D, 3Dj, 2D, laz, 1D, laz, 2D) x 19, 2R, 2D, 3Dj, 2D, laz, 1D, laz, 2D, 2R, 2D, 3Dj, 2D, laz, 1D, laz, 4D, girar.

**Vta 58:** PD, 1D, (10R, 2D) x 2, (10R, 2D) x 19, 10R, 2D, 5R.

**Vta 59:** 1D, laz, 1D, 3D, 2R, 3Dj, 3D, laz, 1D, laz, 3D, (2R, 3Dj, 3D, laz, 1D, laz, 3D) x 19, (2R, 3Dj, 3D, laz, 1D, laz, 3D) x 2, 2R, 6D, girar.

**Vta 60:** PD, 5R, (2D, 10R) x 2, 2D, (10R, 2D) x 19, 10R, 2D, R hasta final.

Quedan 392 pts en la aguja. Cortar el hilo de color 15, **unir el hilo de color 12** y tejer en punto de lazadas:

**Vta 1 (DL):** 1D, laz, A3, \*2D, 2Dj, laz, repetir desde \* hasta últimos 2 pts (los puntos dobles se tejen como puntos simples, tejiendo las 2 hebras juntas), A3, laz, 1D.

**Vta 2 (RL):** revés.

**Vta 3:** 1D, laz, A3, D hasta últimos 2 pts, A3, laz, 1D.

**Vta 4:** revés.

**Vta 5 (LD):** 1D, laz, A3, 2D, \*2Dj, laz, 2D, repetir desde \* hasta últimos 4 pts, 2D, A3, laz, 1D.

**Vta 6 (LA):** revés.

**Vta 7:** 1D, laz, A3, D hasta últimos 2 pts, A3, laz, 1D.

**Vta 8:** revés.

Repetir las vtas 1 - 8, 1 vez más. [440 pts]

Cortar el hilo de color 12, **unir el hilo de color 16** y tejer las hojas en vtas cortas. **Tejer las vtas 1 - 40 (gráficos A e B)** como para el color 14 + **las vtas 41 - 60 (gráfico C)** como para el color 15. Seguidamente, tejer el gráfico D o la instrucción escrita siguiente:

**Vta 61 (DL):** 1D, laz, A3, 6D, (2R, 10D) x 23, 2D, girar.

**Vta 62 (RL):** PD, 1D, (10R, 2D) x 23, 11R.

**Vta 63:** 1D, laz, A3, 9D, (2R, laz, 1D, laz, DD, 6D) x 23, 2R, 6D, girar.

**Vta 64:** PD, 5R, 2D, (10R, 2D) x 23, 10R, 2D, 2R.

**Vta 65:** 1D, laz, A3, 2R, (1D, laz) x 2, 1D, DD, 4D, [2R, (1D, laz) x 2, 1D, DD, M4] x 23, 2R, 12D, girar.

**Vta 66:** PD, 1D, 10R, 2D, (10R, 2D) x 23, 10R, 2D, 5R.

**Vta 67:** 1D, laz, A3, 3D, 2R, 2D, laz, 1D, laz, 2D, DD, 2D, (2R, 2D, laz, 1D, laz, 2D, DD, 2D) x 23, 2R, 2D, laz, 1D, laz, 2D, DD, 2D, 2R, 6D, girar.

**Vta 68:** PD, 5R, 2D, 10R, 2D, (10R, 2D) x 23, 10R, 2D, 8R.

**Vta 69:** 1D, laz, A3, 6D, 2R, M3, laz, 1D, laz, M3, DD, (2R, 3D, laz, 1D, laz, 3D, DD) x 23, 2R, 3D, laz, 1D, laz, 3D, DD, 2R, 12D, girar.

**Vta 70:** PD, 1D, (10R, 2D) x 2, (10R, 2D) x 23, 10R, 2D, 11R.

**Vta 71:** 1D, laz, A3, 9D, 2R, 10D, (2R, 10D) x 23, (2R, 10D) x 2, 2R, 6D, girar.

Cut colour 12 yarn, **join colour 15** and work the short rows that form the leaves. **Work rows 1 - 40 (charts A and B)** as for colour 14. Then work the following written instruction or chart C:

**Row 41 (RS):** K, yo, M3, (P2, K10) x 16, K2, turn.

**Row 42 (WS):** DS, K, (P10, K2) x 16, P5.

**Row 43:** K, yo, M3, K3, (P2, yo, K, yo, sssk, K6) x 16, P2, K6, turn.

**Row 44:** DS, P5, K2, (P10, K2) x 16, P8.

**Row 45:** K, yo, M3, K6, (P2, (K, yo) x 2, K, sssk, K4) x 16, P2, K12, turn.

**Row 46:** DS, K, P10, K2, (P10, K2) x 16, P11.

**Row 47:** K, yo, M3, (K, yo) x 2, K2, sssk, K2, (P2, K2, yo, K, yo, K2, sssk, K2) x 16, P2, K2, yo, K, yo, K2, sssk, K2, P2, K6, turn.

**Row 48:** DS, P5, K2, P10, K2, (P10, K2) x 16, P10, K2, P2.

**Row 49:** K, yo, M3, P2, K3, yo, K, yo, K3, sssk, (P2, K3, yo, K, yo, K3, sssk) x 16, P2, K3, yo, K, yo, K3, sssk, P2, K12, turn.

**Row 50:** DS, K, (P10, K2) x 2, (P10, K2) x 16, P10, K2, P5.

**Row 51:** K, yo, M3, K3, (P2, K10) x 19, P2, K6, turn.

**Row 52:** DS, P5, K2, (P10, K2) x 19, P8.

**Row 53:** K, yo, M3, K2, K3tog, yo, K, yo, (P2, K6, K3tog, yo, K, yo) x 19, P2, K12, turn.

**Row 54:** DS, K, P10, K2, (P10, K2) x 19, P11.

**Row 55:** K, yo, M3, K3, K3tog, (K, yo) x 2, K, (P2, K4, K3tog, (K, yo) x 2, K) x 19, P2, K4, K3tog, (K, yo) x 2, K, P2, K6, turn.

**Row 56:** DS, P5, K2, P10, K2, (P10, K2) x 19, P10, K2, P2.

**Row 57:** K, yo, M3, P2, K2, K3tog, K2, yo, K, yo, K2, (P2, K2, K3tog, K2, yo, K, yo, K2) x 19, P2, K2, K3tog, K2, yo, K, yo, K2, P2, K2, K3tog, K2, yo, K, yo, K4, turn.

**Row 58:** DS, K, (P10, K2) x 2, (P10, K2) x 19, P10, K2, P5.

**Row 59:** K, yo, K, K3, P2, K3tog, K3, yo, K, yo, K3, (P2, K3tog, K3, yo, K, yo, K3) x 19, (P2, K3tog, K3, yo, K, yo, K3) x 2, P2, K6, turn.

**Row 60:** DS, P5, (K2, P10) x 2, K2, (P10, K2) x 19, P10, K2, P to end.

You should have 392 sts on the needles. Cut colour 15 yarn, **join colour 12** again and work the eyelets stitch pattern:

**Row 1 (RS):** K1, yo, M3, \*K2, K2tog, yo\* repeat from \* to \* until last 2 sts (be careful to knit the DS as a single st, knitting both legs of the DS together), M3, yo, K1.

**Row 2 (WS):** P to end.

**Carr 3:** K1, yo, M3, K to last 2 sts, M3, yo, K1.

**Carr 4:** P to end.

**Carr 5:** K1, yo, M3, K2, \*K2tog, yo, K2\* repeat from \* to \* until last 4 sts, K2, M3, yo, K1.

**Carr 6:** P to end.

**Carr 7:** K1, yo, M3, K to last 2 sts, M3, yo, K1.

**Carr 8:** P to end.

Repeat rows 1 - 8, 1 more time. [440 sts]

Cut colour 12 yarn, **join colour 16** and work the short rows that form the leaves. **Work rows 1 - 40 (chart A and B)** as for colour 14 and **rows 41 - 60 (chart C)** as for colour 15. Then the following written instruction or chart D:

**Row 61 (RS):** K, yo, M3, K6, (P2, K10) x 23, K2, turn.

**Row 62 (WS):** DS, K, (P10, K2) x 23, P11.

**Row 63:** K, yo, M3, K9, (P2, yo, K, yo, sssk, K6) x 23, P2, K6, turn.

**Row 64:** DS, P5, K2, (P10, K2) x 23, P10, K2, P2.

**Row 65:** K, yo, M3, P2, (K, yo) x 2, K, sssk, K4, (P2, (K, yo) x 2, K, sssk, K4) x 23, P2, K12, turn.

**Row 66:** DS, K, P10, K2, (P10, K2) x 23, P10, K2, P5.

**Row 67:** K, yo, M3, K3, P2, K2, yo, K, yo, K2, sssk, K2, (P2, K2, yo, K, yo, K2, sssk, K2) x 23, P2, K2, yo, K, yo, K2, sssk, K2, P2, K6, turn.

**Row 68:** DS, P5, K2, P10, K2, (P10, K2) x 23, P10, K2, P8.

**Row 69:** K, yo, M3, K6, P2, K3, yo, K, yo, K3, sssk, (P2, K3, yo, K, yo, K3, sssk) x 23, P2, K3, yo, K, yo, K3, sssk, P2, K12, turn.

**Row 70:** DS, K, (P10, K2) x 2, (P10, K2) x 23, P10, K2, P11.

**Row 71:** K, yo, M3, K9, P2, K10, (P2, K10) x 23, (P2, K10) x 2, P2, K6, turn.



PURE NEW WOOL



ISO 9001

40  
ANOS

203

Primavera . Verano  
Spring . Summer**Vta 72:** PD, 5R, (2D, 10R) x 2, 2D, (10R, 2D) x 23, (10R, 2D) x 2, 2R.**Vta 73:** 1D, laz, A3, (2R, 6D, 3Dj, laz, 1D, laz) x 2, (2R, 6D, 3Dj, laz, 1D, laz), (2R, 6D, 3Dj, laz, 1D, laz) x 2, 2R, 12D, girar.**Vta 74:** PD, 1D, (10R, 2D) x 3, (10R, 2D) x 23, (10R, 2D) x 2, 5R.**Vta 75:** 1D, laz, A3, 3D, (2R, 4D, 3Dj, (1D, laz) x 2, 1D) x 2, (2R, 4D, 3Dj, (1D, laz) x 2, 1D) x 23, (2R, 4D, 3Dj, (1D, laz) x 2, 1D) x 3, 2R, 6D, girar.**Vta 76:** PD, 5R, (2D, 10R) x 3, 2D, (10R, 2D) x 23, (10R, 2D) x 2, 8R.**Vta 77:** 1D, laz, A3, 6D, (2R, 2D, 3Dj, 2D, laz, 1D, laz, 2D) x 2, (2R, 2D, 3Dj, 2D, laz, 1D, laz, 2D) x 23, (2R, 2D, 3Dj, 2D, laz, 1D, laz, 2D) x 3, 2R, 2D, 3Dj, 2D, laz, 1D, laz, 4D, girar.**Vta 78:** PD, 1D, (10R, 2D) x 4, (10R, 2D) x 23, (10R, 2D) x 2, 11R.**Vta 79:** 1D, laz, A3, 9D, (2R, 3Dj, 3D, laz, 1D, laz, 3D) x 2, (2R, 3Dj, 3D, laz, 1D, laz, 3D) x 23, (2R, 3Dj, 3D, laz, 1D, laz, 3D) x 4, 2R, 6D, girar.**Vta 80:** PD, 5R, (2D, 10R) x 4, 2D, (10R, 2D) x 23, (10R, 2D) x 2, 14L.

Aún con el hilo de color 16 cerrar todos los puntos de ese mismo color, por el derecho de la labor y sin apretar. En el final de los puntos de color 16, unir el hilo del color 12 y cerrar los puntos restantes de la misma forma. Esconder todos los cabos, lavar y bloquear el chal.

## ABREVIACIONES

**D:** derecho**R:** revés**cm:** centímetros**pt(s):** punto(s)**Vta(s):** vuelta(s)**DL:** derecho de labor**RL:** revés de labor**Laz:** lazada**A3:** tejer 3 pts en 1- tejer (1D, Laz, 1D) en el mismo punto (2 pts aumentados)**2Dj:** tejer 2 puntos juntos del derecho**3Dj:** tejer 3 puntos juntos del derecho**PPD:** "pasa, pasa, teje del derecho" (pasar 2 puntos sin tejer deslizándolos de la aguja izquierda a la derecha como si fuera a tejer del derecho, volver a colocarlos en la aguja izquierda y tejer los 2 puntos juntos por la parte de atrás de la lazada)**DD:** disminución doble (pasar 1 punto sin tejer deslizándolo de la aguja izquierda a la derecha como si fuera a tejer del derecho, tejer 2pts juntos del derecho y deslizar el punto que ha dejado sin tejer por encima de los que acaba de tejer)**PD:** punto doble (explicación detallada abajo)

### VUELTAS CORTAS (a la alemana):

**En las vueltas del derecho:** tejer del derecho hasta el momento de girar la labor, girar y pasar el primer punto sin tejer con el hilo al frente (como si fuera tejer del revés). Llevar el hilo por encima de la aguja hacia atrás y tirar firmemente - este movimiento aprieta el punto, formando el punto doble (PD). Traer el hilo para el frente, por el medio de las agujas y tejer del revés.

**En las vueltas del revés:** girar la labor y traer el hilo para el frente, por entre las 2 agujas. Pasar el primer punto sin tejer (como si fuera tejer del revés), llevar el hilo por encima de la aguja hacia atrás y tirar firmemente formando el punto doble (PD).

En las vueltas siguientes los puntos dobles se tejen como puntos simples, tejiendo las 2 hebras juntas.

## BIO LOVE

(100% Algodón Orgánico/100% Organic Cotton)

En junio hay una nueva tradición: un Nuevo chal de verano para acompañarnos a lo largo de la temporada. Este año, hemos elegido el Hilo Bio Love para tejer un chal colorido, com puntos increíbles, pero ligero y muy cómodo, tan práctico que se convierte en el accesorio ideal para usar en las fiestas y bailarines de verano.

In June, there is a recent tradition: a new summer shawl that will come in handy throughout this season. This year, we've chosen the Bio Love yarn to create a colourful shawl with amazing stitches, yet surprisingly lightweight and comfortable. It's so practical that it comes out on top as the ideal accessory to wear at parties and summer festivals.

**Row 72:** DS, P5, (K2, P10) x 2, K2, (P10, K2) x 23, (P10, K2) x 2, P2.**Row 73:** K, yo, M3, (P2, K6, K3tog, yo, K, yo) x 2, (P2, K6, K3tog, yo, K, yo), (P2, K6, K3tog, yo, K, yo) x 2, P2, K12, turn.**Row 74:** DS, K, (P10, K2) x 3, (P10, K2) x 23, (P10, K2) x 2, P5.**Row 75:** K1, yo, M3, K3, (P2, K4, K3tog, (K1, yo) x 2, K1) x 2, (P2, K4, K3tog, (K1, yo) x 2, K1) x 23, (P2, K4, K3tog, (K1, yo) x 2, K1) x 3, P2, K6, turn.**Row 76:** DS, P5, (K2, P10) x 3, K2, (P10, K2) x 23, (P10, K2) x 2, P8.**Row 77:** K1, yo, M3, K6, (P2, K2, K3tog, K2, yo, K1, yo, K2) x 2, (P2, K2, K3tog, K2, yo, K1, yo, K2) x 23, (P2, K2, K3tog, K2, yo, K1, yo, K2) x 3, P2, K2, K3tog, K2, yo, K1, yo, K4, turn.**Row 78:** DS, K1, (P10, K2) x 4, (P10, K2) x 23, (P10, K2) x 2, P11.**Row 79:** K1, yo, M3, K9, (P2, K3tog, K3, yo, K1, yo, K3) x 2, (P2, K3tog, K3, yo, K1, yo, K3) x 23, (P2, K3tog, K3, yo, K1, yo, K3) x 4, P2, K6, turn.**Row 80:** DS, P5, (K2, P10) x 4, K2, (P10, K2) x 23, (P10, K2) x 2, P14.

Bind off all green stitches, knit wise and loosely. When you get to the blue stitches, join blue yarn and continue binding off all stitches in the same way. Weave in all ends and block to shape.

## ABBREVIATIONS

**K:** knit**P:** purl**sts:** stitch/stitches**RS:** right side**WS:** wrong side**yo:** yarn over**M3:** make 3 sts out of 1 - K1, Yo, K1 into the same st (2 sts increased)**K3tog:** knit 3 sts together**sssk:** slip, slip, slip, knit (slip 3 sts as if to knit, one at a time; insert the left needle into the front of the slipped sts and knit them together through back loop)**DS:** double stitch (see note below)

### GERMAN SHORT-ROWS:

**On right side rows:** knit to turning point; turn and slip the first stitch purl wise with yarn in front, bring yarn over the needle to the back of work and pull tight - this creates the double stitch (DS). Bring yarn between needles to front of work to begin purling.

**On wrong side rows:** purl to turning point; turn and bring yarn to front between needles, slip the first stitch purl wise; bring yarn over the needle to the back of work and pull tight - this creates the double stitch (DS); begin knitting.

On following rows/rounds work DS's as single stitches, knitting or purling both legs of the DS together.



Color/Colour 11



PURE NEW WOOL



ISO 9001

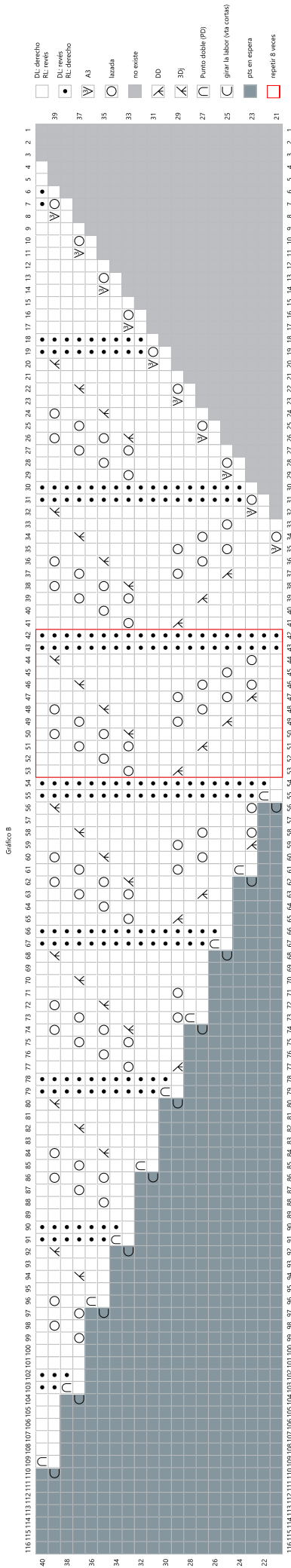
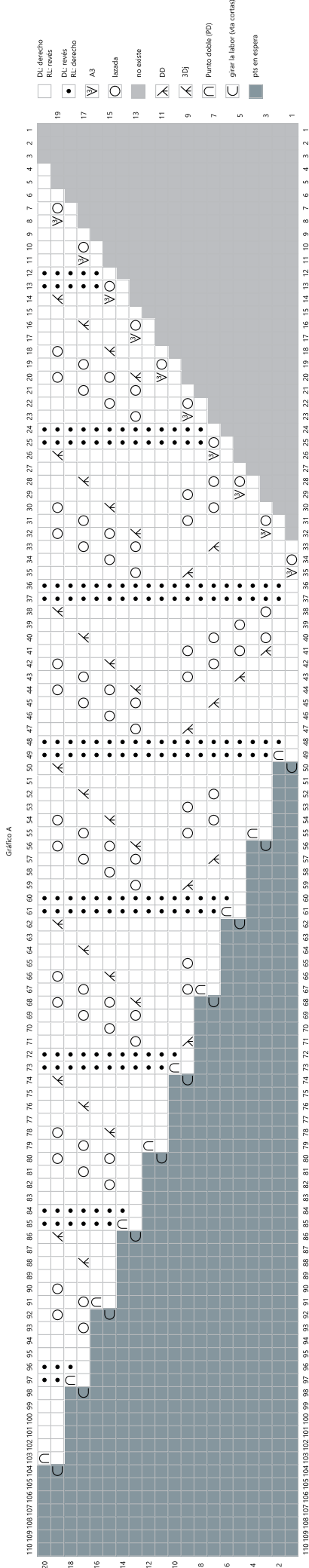
40  
ANOS

Rua das Grutas, 13 - Apartado 123 - 2485-059 Mira de Aire - Portugal  
Tel. +351 244 447 300 Fax +351 244 447 309  
info@rosarios4.com www.rosarios4.com

# GRÁFICOS

# 203

Primavera . Verano  
Spring . Summer



Rua das Grutas, 13 - Apartado 123 2485-059 Mira de Aire - Portugal  
 Tel. +351 244 447 300 Fax +351 244 447 309  
 info@rosarios4.com www.rosarios4.com



40 ANOS

# 203

Primavera . Verano  
Spring . Summer



40  
AÑOS

Rua das Grutas, 13 - Apartado 123 2485-059 Mira de Aire - Portugal  
Tel. +351 244 447 300 Fax +351 244 447 309  
info@rosarios4.com www.rosarios4.com

Gráfico C

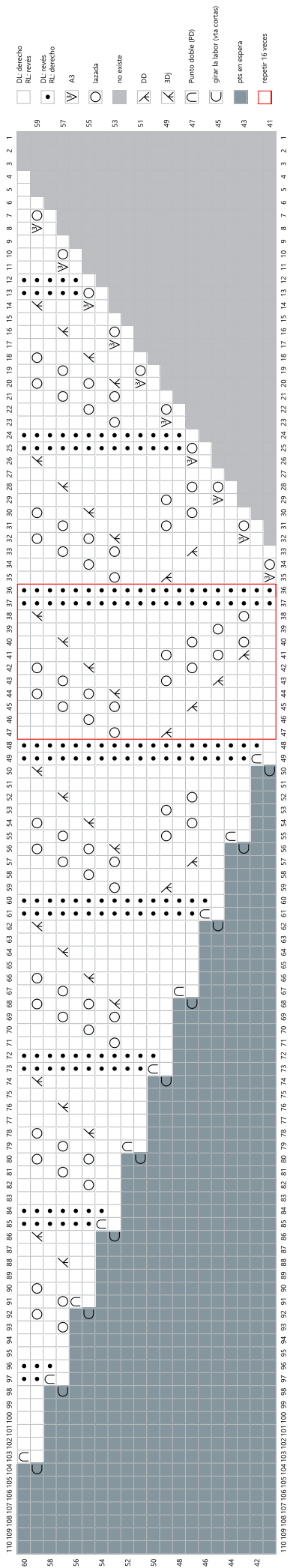
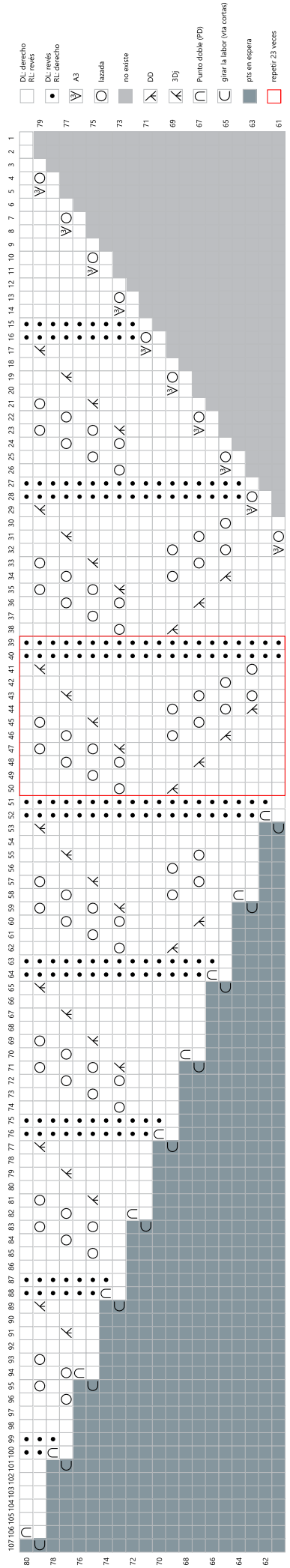


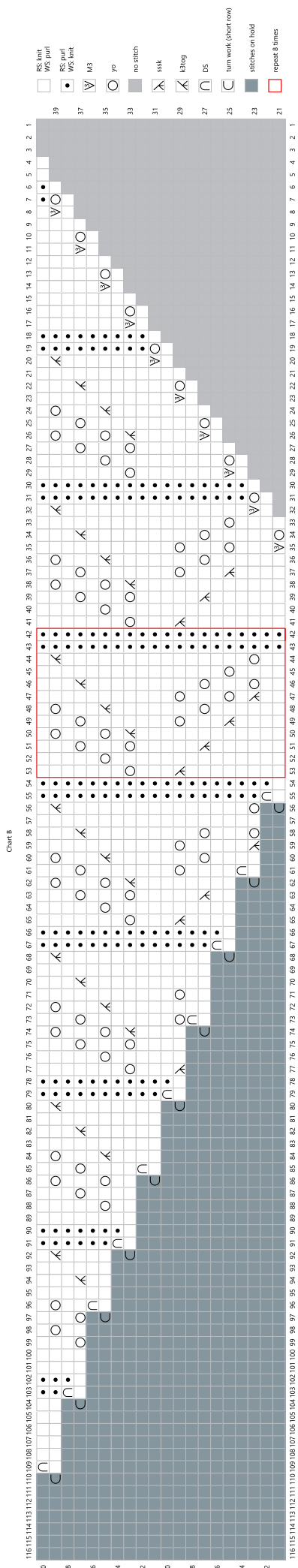
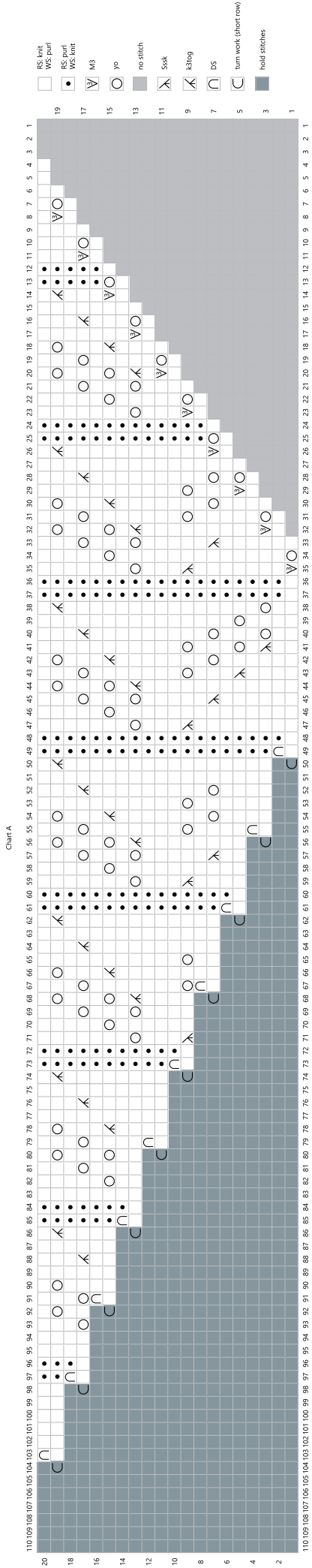
Gráfico D



GRAPHICS

203

Primavera . Verano  
Spring . Summer



Rua das Grúas, 13 - Apartado 123 2485-059 Mira de Aire - Portugal  
Tel. +351 244 447 300 Fax +351 244 447 309  
info@rosarios4.com www.rosarios4.com





# 203

Primavera . Verano  
Spring . Summer



Rua das Grutas, 13 - Apartado 123 2485-059 Mira de Aire - Portugal  
Tel. +351 244 447 300 Fax +351 244 447 309  
info@rosarios4.com www.rosarios4.com

Chart C

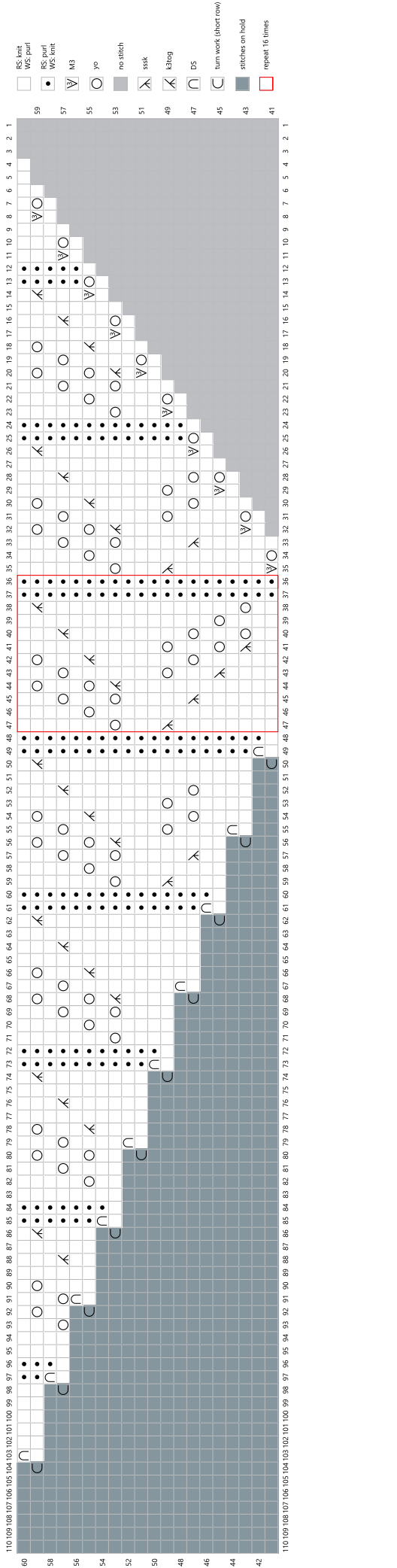


Chart D

