

N.º 405

Rosários 4[®]

Autumn/Winter Collection

Autumn/Winter Collection

ROSAS SHAWL

DESIGN:

Filipa Carneiro
@filipa_nionoi



ROMARIA | 08



100% WOOL



ROSAS SHAWL

ROMARIA



100% WOOL



LIGEIRO/ LIGHT
LIGERO

100g
3,50 oz

320
METROS
METRES
349
YARDS

YARN

2 balls of **ROMARIA** from Rosários 4, **color 08**.

GAUGE

25 sts and 9 rows – 10 x 10 cm in filet crochet pattern with 3 mm crochet hook, washed and blocked (it's important to wash and block your swatch in order to get the correct gauge).

NEEDLES

3 mm crochet hook (if necessary, adjust the needle size to match the gauge).

NOTIONS

Tapestry needle.

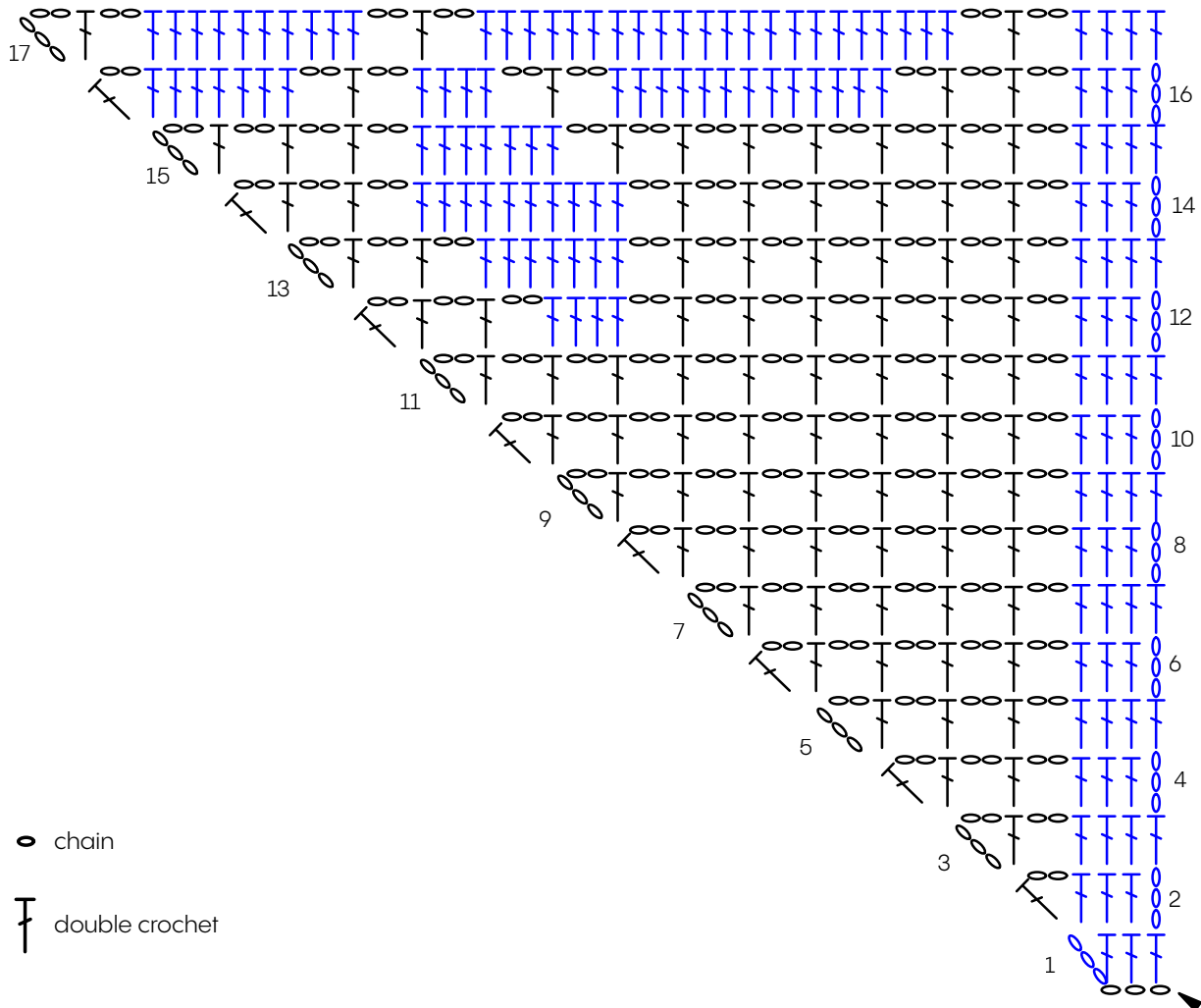
FINISHED MEASUREMENTS

112 cm wide and 100 cm high.



For this triangular shawl, we begin with just 3 stitches and work with increases on every row. The motifs are made using the filet crochet technique. In this technique, the foundation of the work is a grid of double crochets and chains. To create the motifs, we follow a chart of colored and white squares. Each colored square represents a filled (or closed) block, and each white square represents an open block. For the filled block you work 3 double crochets and for the open block you work 2 chain stitches and 1 double crochet.

Here's a detailed look at how to work the first rows of the chart:



INSTRUCTION

Chain 6 and work as follows:

Row 1: work 1 dc in the 4th chain, 2 dc.

Row 2: ch-3, 3 dc, INC (2 ch + 1 dc in the last st).

Row 3: INC (work 5 ch), 1 dc, 2 ch, 4 dc.

Row 4: ch-3, 3 dc, (2 ch, 1 dc) x 2, INC.

Row 5: INC, 1 dc, (2 ch, 1 dc) x 3, 3 dc.

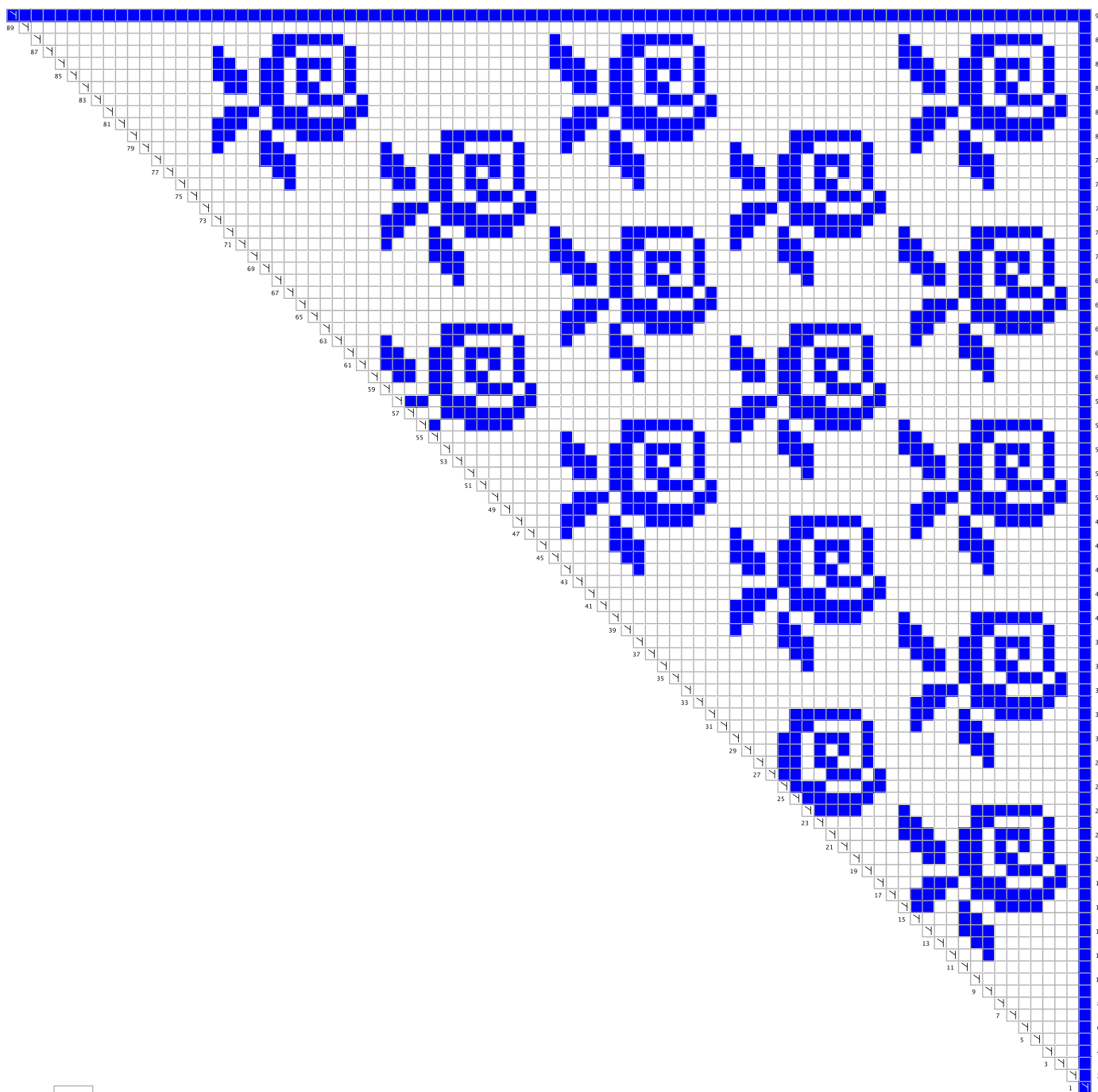
Row 6: ch-3, 3 dc, (2 ch, 1 dc) x 4, INC.




Row 7: INC, 1 dc, (2 ch, 1 dc) x 5, 3 dc.

Continue working in the established pattern and following chart A. That is, work increases at the end of the even rows and at the beginning of the odd rows and follow the filet crochet pattern to make the motifs.

Note: the 3 chains at the beginning of the row count as 1 double crochet.

CHART A



-  Open = 2 ch + 1 dc
-  Closed = 3 dc
-  Increase

TASSELS

Make 3 tassels as follows: wind the yarn around a card approx. 10 cm high for 30 turns. Prepare a piece of yarn approx. 40 cm long and tie the top part with a knot. Cut off the bottom and remove the card. At the top of the tassel, about 2 cm down, wrap the yarn around several times and tighten with 1 knot. Leave the ends to attach the tassel to the corners of the shawl.

FINISHING

Weave in all ends with a tapestry needle. Wash carefully with mild soap. Block garment to final measurements.

ABBREVIATIONS

st/sts stitch/stitches

rep repeat.

ch chain

dc double crochet

INC increase;

On the odd rows (increase at the beginning of the row): work 5 chains;

On the even rows (increase at the end of the row): work 2 ch + 1 dc in the last stitch.



PATTERN SUPPORT

If you need help with this pattern, please email me at:

filipa.nionoi@gmail.com

I would love to see the progress of your work and the final garment, please share your photos on social media using:

#ROSASSHAWL #FILIPACARNEIRODESIGNS #ROSARIOS4ROMARIA #ROSARIOS4

YARN

Where can I find this yarn? Send an email to:

geral@rosarios4.com



Rua das Grutas, 13
Apartado 123
2485-059 Mira de Aire
PORTUGAL
Tel. +351 244 447 300
info@rosarios4.com

www.rosarios4.com



Rosários 4®