

N.º 391

Rosários4[®]



Autumn/Winter Collection

Autumn/Winter Collection

BOMBOCA CARDIGAN

DESIGN:

Marta Ovelha
@marta_ovelha



MARIALVA · 19

60% ACRYLIC, 25% WOOL, 15% ALPACA



n.º 391

Autumn/Winter Collection

P. 2

BOMBOCA CARDIGAN

SIZES: 1 (2, 3, 4, 5)

MARIALVA

60% ACRYLIC, 25% WOOL, 15% ALPACA

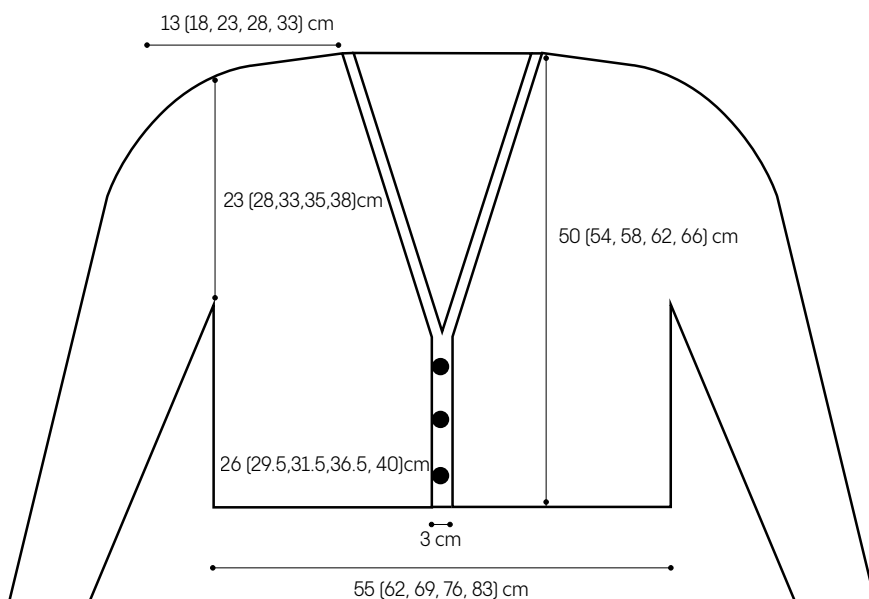


FINO/FINE

100g
3.50 oz

350
METROS
METRES
382
YARDS

Rosários 4



YARN

6 (7,7,8,10) balls of **Marialva** from Rosários 4.

NOTIONS

3 buttons 28 mm, tapestry needle, scissors.

GAUGE

14 sts and 10 rows - 10x10 cm in half double crochet, washed and blocked.

NEEDLES

5 mm crochet hook.

SIZES

1 (2, 3, 4, 5).

FINISHED MEASUREMENTS

88 (98, 108, 118, 128) cm of bust circumference (refer to the schematic for more measurements); oversized jacket.

This cardigan is knitted in 5 pieces, front, back, and sleeves. The back is worked flat and from the bottom up. The sleeves are worked from the top down, with decreases to adjust the cuff. The half double crochet stitch, alternated with the post stitches, makes the twisted cables. The pieces are sewn with a slip-stitch seam.

SPECIAL STITCHES

FPtr: front post in treble crochet (work a treble crochet st inserting the hook, from front to back, around the post of the stitch on the second row below).

3FPtr crossed: 1 FPtr worked in the second FPtr of the previous row, 1 FPtr worked in the third FPtr of the previous row, and 1 FPtr worked in the first FPtr of the previous row.



BACK

Cast on 48 (62, 76, 90, 104) chains, work following **Chart A** or this written instruction:

Row 1 (RS): 2 ch to turn, 48 (62, 76, 90, 104) hdc.

Row 2 (WS): 2 ch to turn, 48 (62, 76, 90, 104) hdc.

Row 3: 2 ch to turn, 5 hdc, 3 FPtr, |4 hdc, 3 FPtr| x 2 (7, 9, 11, 13), 5 hdc.

Row 4: 2 ch to turn, 48 (62, 76, 90, 104) hdc.

Row 5: 2 ch to turn, 5 hdc, 3FPtr crossed, |4 hdc, 3FPtr crossed| x 2 (7, 9, 11, 13), 5 hdc.

Row 6: 2 ch to turn, 48 (62, 76, 90, 104) hdc.

Repeat Rows for 2 to 5 more rows 53 (57, 61, 65, 69).

Row 54 (58, 62, 66, 70): 2 ch to turn, 54 (68, 82, 96, 110) sts. Cut the yarn and bind off.

BORDER

Outline the piece in single crochet: with RS facing, work 1 complete round in sc. At the shoulder and hem edges, knit 1 sc in each stitch. On the side selvages knit 2 sc in each row, knitting a total of 108 (116, 122, 132, 140) sts on each side. Cut the yarn and bind off.

RIGHT FRONT

Cast on 27 (34, 41, 48, 55) chains, work following to **Chart A** or this written instruction:

Row 1 (RS): 2 ch to turn, 27 (34, 41, 48, 55) hdc.

Row 2 (WS): 2 ch to turn, 27 (34, 41, 48, 55) hdc.

Row 3: 2 ch to turn, 5 hdc, 3 padrf, |4 hdc, 3 padrf| x 2 (3, 4, 5, 6), 5 hdc.

Row 4: 2 ch to turn, 27 (34, 41, 48, 55) hdc.

Row 5: 2 ch to turn, 5 hdc, 3padrf crossed, |4 hdc, 3padrf crossed| x 2 (3, 4, 5, 6), 5 hdc.

Row 6: 2 ch to turn, 27 (34, 41, 48, 55) hdc.

Repeat Rows 2 to 5 until Row 27.

Rows 28 to 53 (57, 61, 65, 69): work the neckline decreases following **chart B**.

Row 54 (58, 62, 66, 70): 2 ch to turn, 14 (19, 24, 29, 34) hdc. Cut the yarn and bind off.

LEFT FRONT

Cast on 27 (34, 41, 48, 55) chains, work following **Chart A** or this written instruction:

Row 1(RS): 2 chains up, 27 (34, 41, 48, 55) hdc.

Row 2 (WS): 2 ch to turn, 27 (34, 41, 48, 55) hdc.

Row 3: 2 ch to turn, 5 hdc, 3 padrf, |4 hdc, 3 padrf| x 2 (3, 4, 5, 6), 5 hdc.

Row 4: 2 ch to turn, 27 (34, 41, 48, 55) hdc.

Row 5: 2 ch to turn, 5 hdc, 3padrf crossed, |4 hdc, 3padrf crossed| x 2 (3, 4, 5, 6), 5 hdc.

Row 6: 2 ch to turn, 27 (34, 41, 48, 55) hdc.

Repeat Rows 2 to 5 until Row 53 (57, 61, 65, 69).

Rows 28 to 53 (57, 61, 65, 69): work the neckline decreases following the **chart C**.

Row 54 (58, 62, 66, 70): 2 ch to turn, 14 (19, 24, 29, 34) hdc. Cut the yarn and bind off.

BORDER

Outline the piece in single crochet: with RS facing, work 1 complete round in sc. At the shoulder and hem edges, knit 1 sc in each stitch. On the side selvages knit 2 sc in each row, knitting a total of 108 (116, 122, 132, 140) sts on each side. Cut the yarn and bind off.

SLEEVES

Cast on 62 (76, 90, 97, 104) chains. Work following **chart A** or this written instruction:

Row 1 (RS): 2 ch to turn, 62 (76, 90, 97, 104) hdc.

Row 2 (WS): 2 ch to turn, 62 (76, 90, 97, 104) hdc.

Row 3: 2 ch to turn, 5 hdc, 3 padrf, |4 hdc, 3 padrf| x 7 (9, 11, 12, 13), 5 hdc.

Row 4: 2 ch to turn, 62 (76, 90, 97, 104) hdc.

Row 5: 2 ch to turn, 5 hdc, 3 crossed padrf, |4 hdc, 3 crossed padrf| x 7 (9, 11, 12, 13), 5 hdc.

Repeat Rows 2 to 5 until Row 27 (22, 17, 16, 14).

Row 28 (23, 18, 17, 15) to Row 48 (50, 52, 54, 56): work the sleeve decreases as follows, decrease one stitch at the beginning and end of each row, work two stitches together, (20 sts for cuff).

Cut the yarn and bind off. Repeat for the other sleeve.

BORDER

Outline the piece in single crochet: with RS facing, work 1 complete round in sc. At the shoulder and hem edges, knit 1 sc in each stitch. On the side selvages knit 2 sc in each row, knitting a total of 96 (100, 104, 108, 112) sts on each side. Cut the yarn and bind off.

SEAMS

Shoulder seam: With RS facing, sew the shoulders joining the front and back pieces, and sew along the selvages with slip stitch from the armhole to the neckline. Repeat on the other shoulder.

Sleeves: with RS facing, join the sleeve in the shoulder seam, centering the armhole, that is, placing half of the sleeve 12 (18, 20) cm on the back and the other half on the front of the cardigan. Sew the armhole with slip stitch. Then sew the bottom of the sleeve in the same way.

Side seams: sew the sides of the cardigan. With RS facing, sew along the selvages with slip stitch from the hem to the armhole. Repeat on the other side.

FINISHING

Hem: Join the yarn at the base of the right selvage, and work in slip stitch for 2 complete rounds, fronts, and waistband. Cut the yarn and finish.

Sleeves: Join the yarn at the sleeve seam and work two complete rounds in slip stitch.

Fronts: join the yarn on the bottom of the right front selvage, work in slip stitch along the entire selvage as follows:

Row 1: 1 slst|bl, INC, repeat all around.

Rows 2 to 5: slst|bl all around.

Row 6: (Buttonholes) 6 slst|bl, 5 sl sts and skip 5 sts, 18 slst|bl, 5 sl sts and skip 5 sts, 18 slst|bl, 5 sl sts and skip 5 sts, work in slst|bl until the end of the row.

Row 7: slst|bl all around (work the chains that form the buttonholes in slst|bl).

Rows 8 to 10: slst|bl all around. Cut the yarn and bind off.

Sew the buttons onto the other selvage with the tapestry needle and a bit of yarn.

Weave in all ends with a tapestry needle. Wash carefully with mild soap. Block garment to final measurements.

CHART A

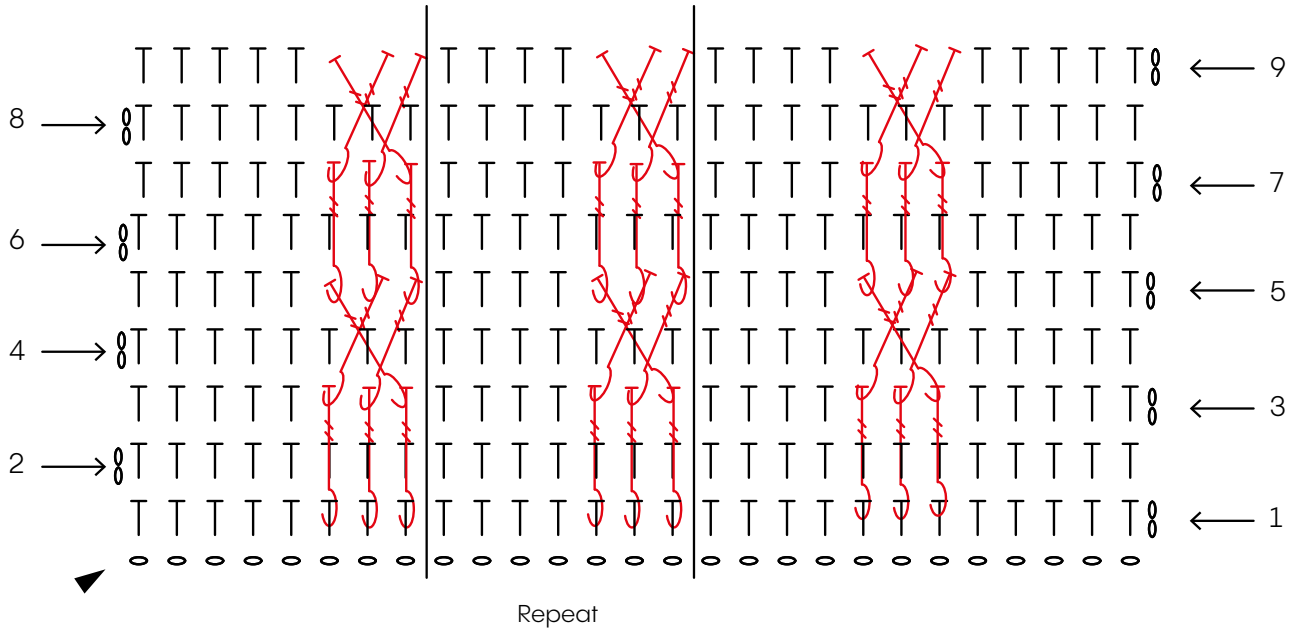


CHART B

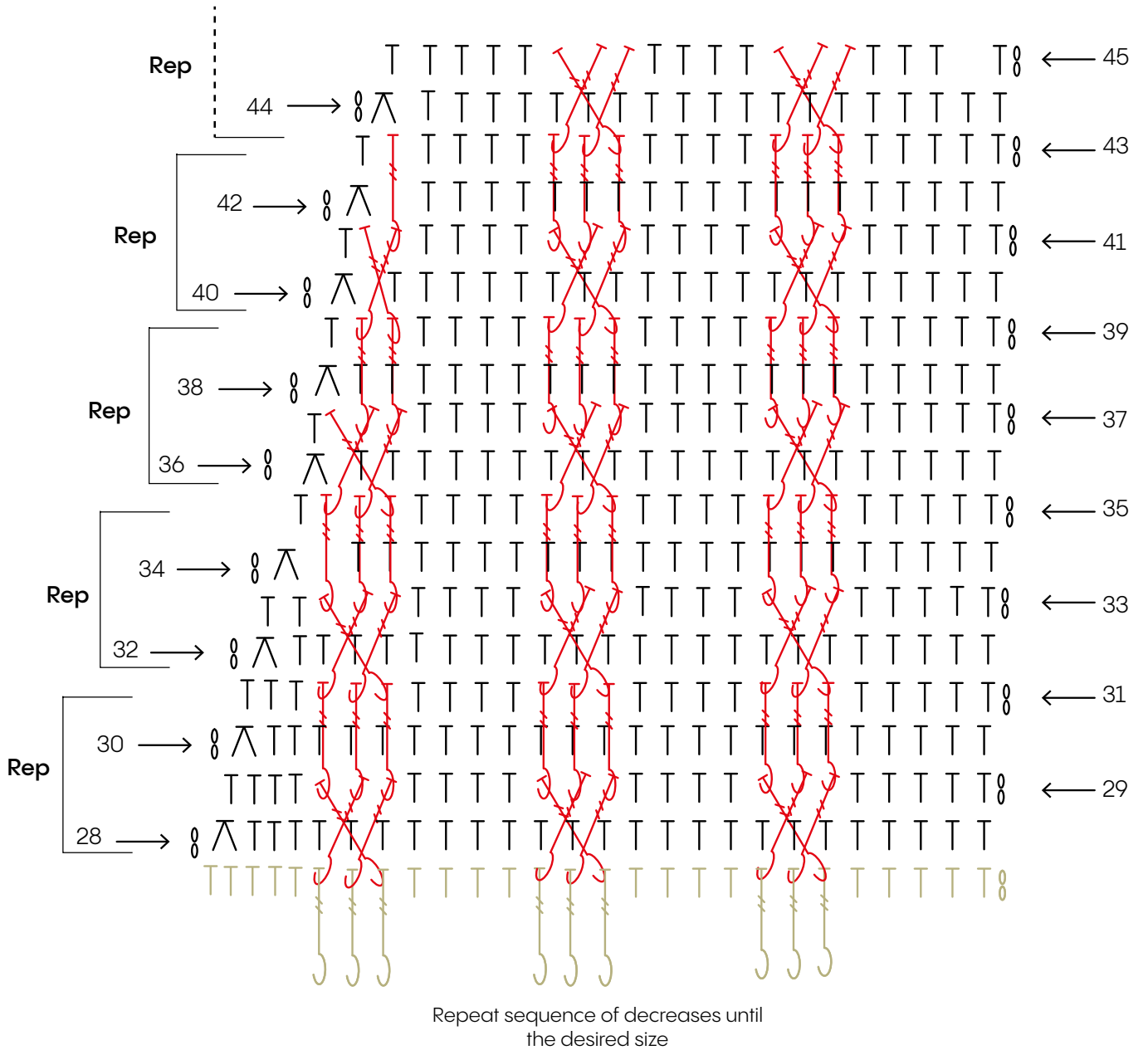
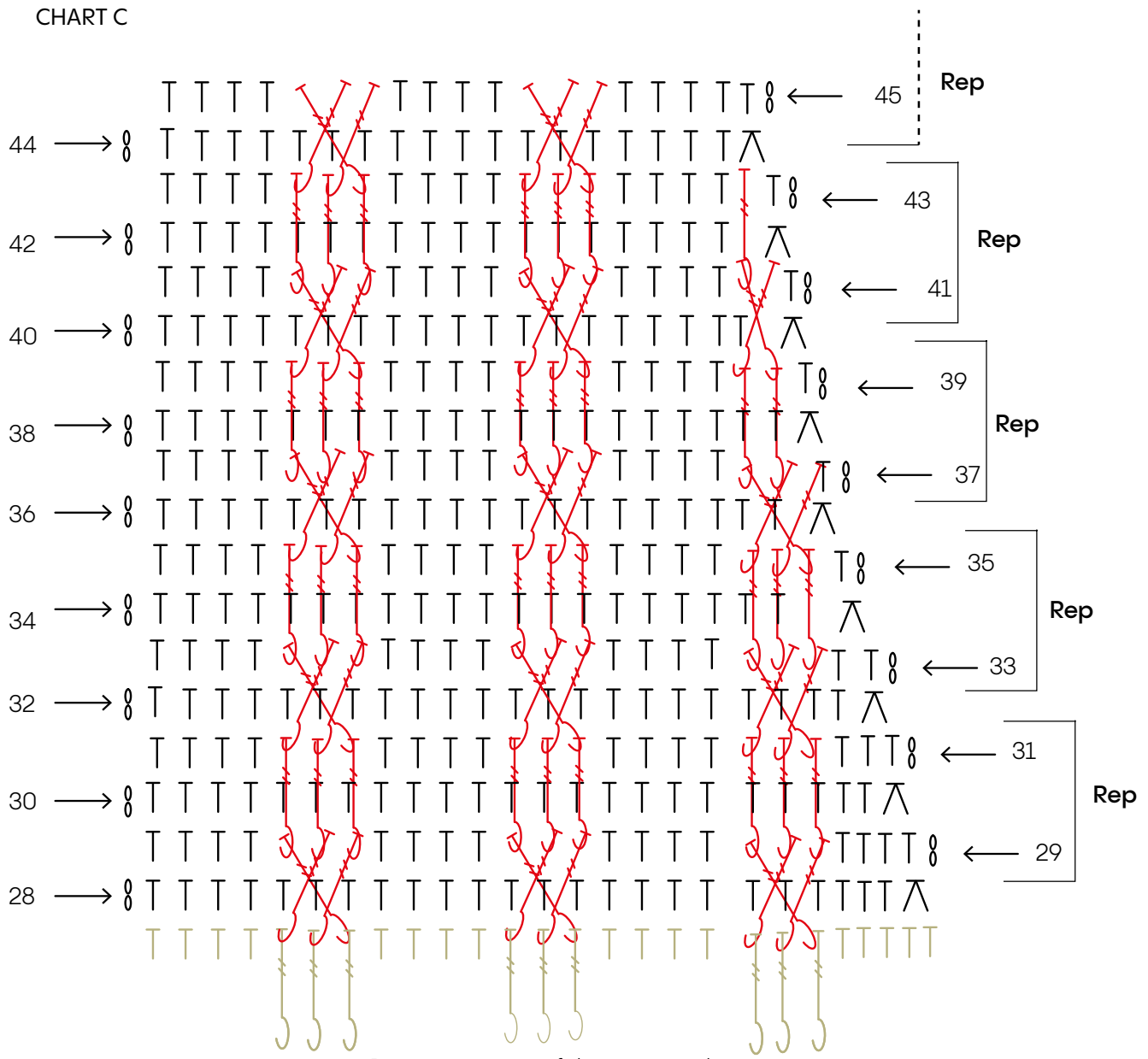


CHART C



Repeat sequence of decreases until the desired size

- ▶ start
- o chain
- T half double crochet
- Λ half double crochet
- ⌋ front posthalf double crochet

ABBREVIATIONS

- ch** chain
slst slip stitch
slst|bl slip stitch crochet through the back loop
sc single crochet
hdc half double crochet
DEC decrease, work 2 hdc together.
INC increase, work 2 slst in the same stitch.
RS right side
WS wrong side
st/s stitch/stitches
cm centimeters

KNIT FOR A HAPPIER WORLD
Rosários4
KNIT FOR A HAPPIER WORLD

I would love to see the progress of your work and the final garment, please share your photos on social media using:

#BOMBOCACARDIGAN #ROSARIOS4MARIALVA

YARN

Where can I find this yarn? Send an email to:

geral@rosarios4.com

Rua das Grutas, 13
Apartado 123
2485-059 Mira de Aire
PORTUGAL
Tel. +351 244 447 300
info@rosarios4.com

www.rosarios4.com



Rosários 4[®]