



# AMORA

#AMORASHRUG | #TJOUTONO2023

By Filipa Carneiro

Para:

*Rosários4*<sup>®</sup>

**YARN:** 2 balls of **TERRA** from Rosários4, color 14 (100% merino wool; 100g/ 170m) - **color A.**

3 balls of **TERRA TWEED** from Rosários4, color 11 (97% merino wool; 3%viscose; 10g/ 170m) - **color B.**

**GAUGE:** 18 sts and 26 rows - 10x10 cm in irish moss stitch with 5 mm needle (é importante lavar e secar a amostra pois a contagem de malhas pode alterar com a primeira lavagem).

**NEEDLES:** 5 mm circular needles with 80 cm cable (if necessary, adjust the needle size to match the gauge).

**NOTIONS:** tapestry needle, removable stitch markers, waste yarn.

**FINISHED MEASUREMENTS:** 130 cm wide and 60 cm height in the back.

# PART 1

## COLLAR

With color A long tail cast on 35 sts. Work the set-up row (WS): p2, k1, p to 3 sts do final, k1, p2.

Work in blackberry stitch pattern following chart A or this written instruction::

**Row 1 (RS):** k2, p1, [(p1, k3) × 2, p1, k1] × 2, (p1, k3) × 2, p2, k2.

**Row 2 (WS):** p2, k2, (p3, k1) × 2, [p1, (k1, p3) × 2, k1] × 2, k1, p2.

**Row 3:** k2, p1, [k3, p1, k1, p1, k3, p1] × 2, k3, p1, k1, p1, k3, p1, k2.

**Row 4:** P2, k1, p3, k1, p1, k1, p3, [k1, p3, k1, p1, k1, p3] × 2, k1, p2.

**Row 5:** K2, p1, [k2, (p1, k1) × 2, p1, k2, p1] × 2, k2, (p1, k1) × 2, (p1, k2) × 2.

**Row 6:** (P2, k1) × 2, (p1, k1) × 2, p2, [k1, p2, (k1, p1) × 2, k1, p2] × 2, k1, p2.

**Row 7:** Repeat row 3.

**Row 8:** Repeat row 4.

**Row 9:** Repeat row 1.

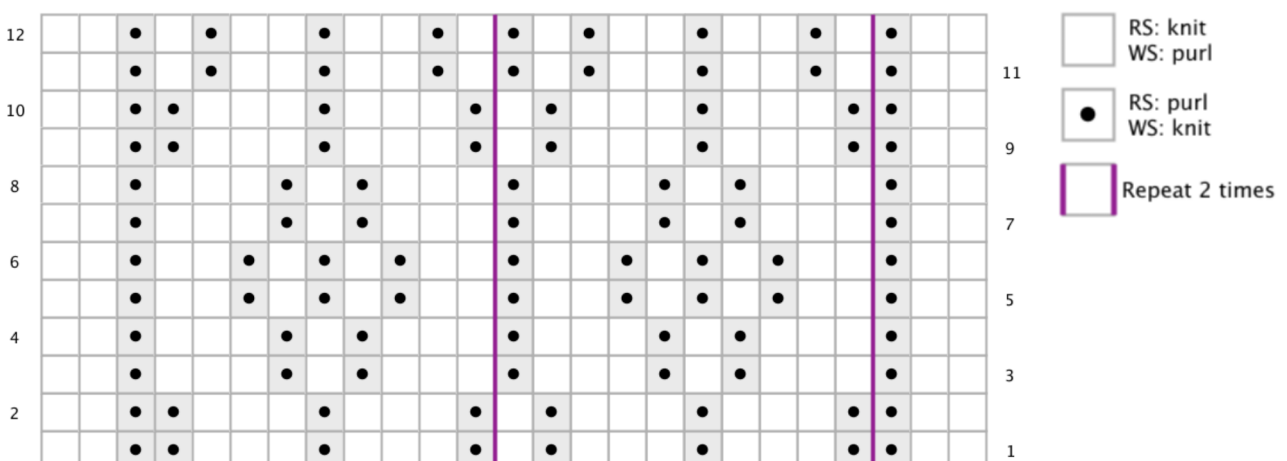
**Row 10:** Repeat row 2.

**Row 11:** K2, p1, [k1, (p1, k2) × 2, p1, k1, p1] × 2, k1, (p1, k2) × 2, p1, k1, p1, k2.

**Row 12:** P2, k1, p1, (k1, p2) × 2, k1, p1, [k1, p1, (k1, p2) × 2, k1, p1] × 2, k1, p2.

Continue working in the established pattern until you complete 104 rows. Place a removable marker on the right selvage to mark this row. Continue working in the established pattern until completing another 130 rows. Place a removable marker on the right selvage to mark this row. Continue working in the established pattern until completing another 104 rows. Bind off all sts knitwise.

## CHART A



## 1st PART VIDEO

[KAL Amora shrug 1st video](#)



## ABBREVIATIONS

**K:** knit.

**P:** purl.

**cm:** centimeters.

**approx.:** approximately.

**Rep:** repeat.

**st/sts:** stitch/ stitches.

**RS:** right side.

**WS:** wrong side.