

Rosários 4[®]

357

Autumn . Winter

Diamonds Wrap



DESIGN
FILIPA CARNEIRO

 filipa_carneiro

IAQUE



89%
Organic
Wool

11%
Yak



CU 000271

Diamonds Wrap

YARN

1 ball of **IAQUE** from Rosários 4, colour 09 (89% organic wool, 11% yak; 50g/200m) - **colour A**.

1 ball of **IAQUE** from Rosários 4, colour 05 (89% organic wool, 11% yak; 50g/200m) - **colour B**.

4 balls of **IAQUE** from Rosários 4, colour 01 (89% organic wool, 11% yak; 50g/200m) - **colour C**.

GAUGE

24 sts and 29 rows - 10x10 cm in zig-zag stitch pattern (chart A) with 3.5 mm needle, washed and blocked (*it's important to wash and block your swatch in order to get the correct gauge*).

NEEDLES

3 and 3.5 mm circular needles with 100 cm cable (*if necessary, adjust the needle size to match the gauge*).

NOTIONS

Tapestry needle.

FINISHED MEASUREMENTS

200 cm long and 46 cm wide.

INSTRUCIONS

With colour A and smaller needle, long tail cast on 115 ms. Work in ribbing:

Row 1 (RS): (p1, k1) rep to 1 st from end, p1.

Row 2 (WS): p to end.

Repeat rows 1 and 2, 3 more times.

Change to bigger needle and work in zig-zag stitch pattern following chart A or the following written instructions:

Row 1 (RS): (p1, k1) × 2, p1, M1R, (k1, **LT**, k4, **LT**, k8, **RT**, k4, **RT**, k1) × 4, (k1, p1) × 3. [116 sts]

Row 2 and all WS rows: p to end.

Row 3: (p1, k1) × 3, (k2, **LT**, k4, **LT**, k6, **RT**, k4, **RT**, k2) × 4, (k1, p1) × 3.

Row 5: (p1, k1) × 3, (k3, (**LT**, k4) × 2, **RT**, k4, **RT**, k3) × 4, (k1, p1) × 3.

Row 7: (p1, k1) × 3, ((k4, **LT**) × 2, k2, (**RT**, k4) × 2) × 4, (k1, p1) × 3.

Row 9: (p1, k1) × 2, p1, **LT**, ((k4, **LT**) × 2, (**RT**, k4) × 2, **LT**) × 4, (p1, k1) × 2, p1.

Row 11: (p1, k1) × 3, ((**LT**, k4) × 3, **RT**, k4, **RT**) × 4, (k1, p1) × 3.

Row 13: (p1, k1) × 3, (k1, **LT**, k4, **LT**, k8, **RT**, k4, **RT**, k1) × 4, (k1, p1) × 3.

Repeat rows 3 to 14, 4 more times.

Row 63: Repeat row 3.

Row 65: Repeat row 5.

Row 67: Repeat row 7.

Row 69: (p1, k1) × 3, (k5, **LT**, k4, **LT**, **RT**, k4, **RT**, k5) × 4, (k1, p1) × 3.

Row 71: (p1, k1) × 3, (k6, (**LT**, k4) × 2, **RT**, k6) × 4, (k1, p1) × 3.

Row 73: (p1, k1) × 3, (k7, **LT**, k8, **RT**, k7) × 4, (k1, p1) × 3.

Row 75: (p1, k1) × 3, (k8, **LT**, k6, **RT**, k8) × 4, (k1, p1) × 3.

Row 77: (p1, k1) × 3, (k9, **LT**, k4, **RT**, k9) × 4, (k1, p1) × 3.

Row 79: (p1, k1) × 3, (k10, **LT**, k2, **RT**, k10) × 4, (k1, p1) × 3.

Row 81: (p1, k1) × 3, (k11, **LT**, **RT**, k11) × 4, (k1, p1) × 3.

Row 83: (p1, k1) × 3, (k12, **LT**, k12) × 4, (k1, p1) × 3.

Change to colour B and work row 84 (WS): p to end.

Continue with colour B, work in simple diamond stitch pattern following chart B or following written instructions:

Row 1 (RS): (p1, k1) × 3, (k9, **LT**, k2, **LT**, k11) × 4, (k1, p1) × 3.

Row 2 and all WS rows: p to end.

Row 3: (p1, k1) × 3, (k10, **LT**, k2, **LT**, k10) × 4, (k1, p1) × 3.

Row 5: (p1, k1) × 3, (k9, **RT**, (**LT**, k2) × 2, **LT**, k5) × 4, (k1, p1) × 3.

Row 7: (p1, k1) × 3, (k8, **RT**, (k2, **LT**) × 3, k4) × 4, (k1, p1) × 3.

Row 9: (p1, k1) × 3, (k7, **RT**, k2, **RT**, (**LT**, k2) × 2, **LT**, k3) × 4, (k1, p1) × 3.

Row 11: (p1, k1) × 3, (k6, **RT**, k2, **RT**, (k2, **LT**) × 3, k2) × 4, (k1, p1) × 3.

Row 13: (p1, k1) × 3, (k1, **LT**, (k2, **RT**) × 2, k4, (**RT**, k2) × 2, **RT**, k1) × 4, (k1, p1) × 3.

Row 15: (p1, k1) × 3, ((k2, **LT**) × 3, (k2, **RT**) × 3, k2) × 4, (k1, p1) × 3.

Row 17: (p1, k1) × 3, (k3, (**LT**, k2) × 2, **LT**, (**RT**, k2) × 2, **RT**, k3) × 4, (k1, p1) × 3.

Row 19: (p1, k1) × 3, (k4, (**LT**, k2) × 3, **RT**, k2, **RT**, k4) × 4, (k1, p1) × 3.

Row 21: (p1, k1) × 3, (k5, (**LT**, k2) × 2, **LT**, **RT**, k2, **RT**, k5) × 4, (k1, p1) × 3.

Row 23: (p1, k1) × 3, (k6, **RT**, (k2, **LT**) × 3, k6) × 4, (k1, p1) × 3.

Row 25: (p1, k1) × 3, (k5, **RT**, k2, **RT**, (**LT**, k2) × 2, **LT**, k5) × 4, (k1, p1) × 3.

Row 27: (p1, k1) × 3, (k4, **RT**, k2, **RT**, (k2, **LT**) × 3, k4) × 4, (k1, p1) × 3.

Row 29: (p1, k1) × 3, (k3, (**RT**, k2) × 2, **RT**, (**LT**, k2) × 2, **LT**, k3) × 4, (k1, p1) × 3.

Row 31: (p1, k1) × 3, ((k2, **RT**) × 3, (k2, **LT**) × 3, k2) × 4, (k1, p1) × 3.

Row 33: (p1, k1) × 3, (k1, (**RT**, k2) × 2, **RT**, k4, (**RT**, k2) × 2, **RT**, k1) × 4, (k1, p1) × 3.

Row 35: rep row 15.

Row 37: rep row 17.

Repeat rows 19 to 38, 2 more times.

Row 79: rep row 19.

Row 81: rep row 21.

Change to colour C and work row 82 (WS): p to end.

Continue with colour C, work in diamonds stitch pattern following chart C or the following written instructions:

Row 1 (RS): (p1, k1) × 3, ((k2, **RT**) × 2, (p2, **LT**, k2, **LT**) × 2, k2) × 4, (k1, p1) × 3.

Row 2 and all WS rows: p to end.

Row 3: (p1, k1) × 3, (k1, **RT**, k2, **RT**, p2, **RT**, **LT**, k2, **LT**, p2, **LT**, k2, **LT**, k1) × 4, (k1, p1) × 3.

Row 5: (p1, k1) × 3, (**RT**, k2, **RT**, p2, **RT**, (k2, **LT**) × 2, p2, **LT**, k2, **LT**) × 4, (k1, p1) × 3.

Row 7: (p1, k1) × 2, p1, **LT**, (k2, **RT**, p2, **RT**, k2, **RT**, **LT**, k2, **LT**, p2, **LT**, k2, **LT**) × 4, (p1, k1) × 2, p1.

Row 9: (p1, k1) × 3, (**LT**, **RT**, p2, **RT**, k2, **RT**, p2, **LT**, k2, **LT**, p2, **LT**, k2) × 4, (k1, p1) × 3.

Row 11: (p1, k1) × 3, (k1, **LT**, p2, **LT**, k2, **LT**, p4, **RT**, k2, **RT**, p2, **LT**, k1) × 4, (k1, p1) × 3.

Row 13: (p1, k1) × 3, (k2, **LT**, p2, **LT**, k2, **LT**, p2, **RT**, k2, **RT**, p2, **RT**, **LT**) × 4, (k1, p1) × 3.



PURE NEW WOOL



ISO 9001

40 ANOS

Row 15: (p1, k1) × 2, p1, **LT**, (k2, **LT**, p2, **LT**, k2, **LT**, **RT**, k2, **RT**, p2, **RT**, k2, **LT**) × 4, (p1, k1) × 2, p1.

Row 17: (p1, k1) × 3, (**LT**, k2, **LT**, p2, (**LT**, k2) × 2, **RT**, p2, **RT**, k2, **RT**) × 4, (k1, p1) × 3.

Row 19: (p1, k1) × 2, p2, (p1, **LT**, k2, **LT**, p2, **LT**, k2, **LT**, **RT**, p2, **RT**, k2, **RT**, p1) × 4, p2, (k1, p1) × 2.

Row 21: (p1, k1) × 2, p2, (p2, **RT**, k2, **RT**, p2, **LT**, k2, **LT**, p2, **LT**, k2, **RT**, p2) × 4, p2, (k1, p1) × 2.

Row 23: (p1, k1) × 2, p2, (p1, **RT**, k2, **RT**, p2, **RT**, **LT**, k2, **LT**, p2, **LT**, k2, **LT**, p1) × 4, p2, (k1, p1) × 2.

Repeat rows 5 to 24, 15 more times.

Next row (RS): rep row 5.

Next row (WS): p to end.

Change to smaller needle and work in ribbing:

Row 1 (RS): (p1, k1) × 2, p1, k2tog, (p1, k1) rep to 1 st from end, p1. [115 sts]

Row 2 (WS): p to end.

Row 3: (p1, k1) rep to 1 st from end, p1.

Row 4: p to end.

Repeat rows 3 and 4, 2 more times. Bind off all sts in ribbing pattern.

FINISHING

Weave in all ends with a tapestry needle. Wash carefully with mild soap. Block garment to final measurements.

ABBREVIATIONS

K: knit

P: purl

cm: centimeters

st/sts: stitch/stitches

rep: repeat

RS: right side

WS: wrong side

k2tog: knit 2 stitches together

M1R: make one right (insert the left-hand needle, from back to front, under the strand of yarn that runs between the stitch just worked and the next stitch on the left-hand needle. Knit this st through the front loop)

LT: left twist (slip 1 stitch knitwise, slip a second stitch knitwise, place both stitches back to left-hand needle on their new orientation; knit into the back of the second stitch, then knit into the back of both stitches and slip both stitches from needle)

RT: right twist (knit 2 together leaving the original sts on the left-hand needle, then knit the first stitch only and slip both sts from the needle)



PURE NEW WOOL



ISO 9001

40
ANOS

SUPPORT

Where can I find this yarn? Send an email to:

geral@rosarios4.com

If you need help with this pattern, please send an email to:

filipa@filipacarneiro.com

We love to see your garments; share them on social media using:

#ROSARIOS4 #DIAMONDSWRAP #ROSARIOS4IAQUE



IAQUE Colour 05
(89% wool; 11% yak)

CHART A

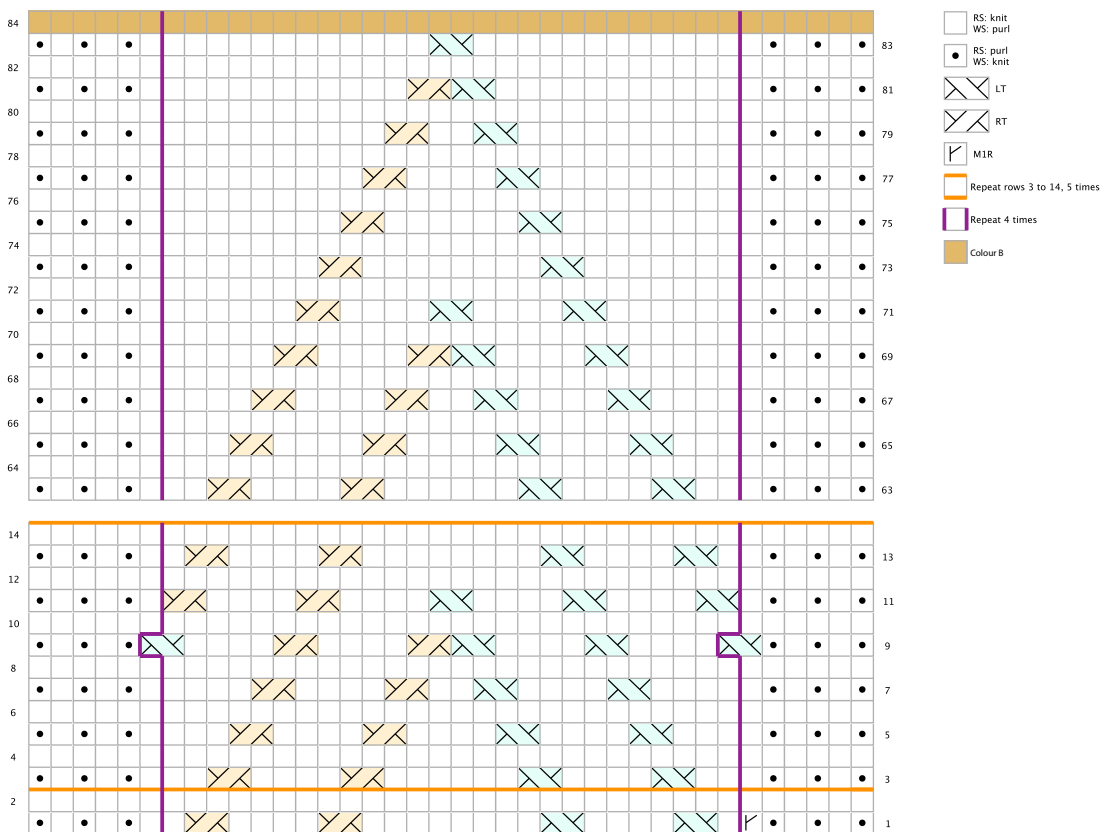
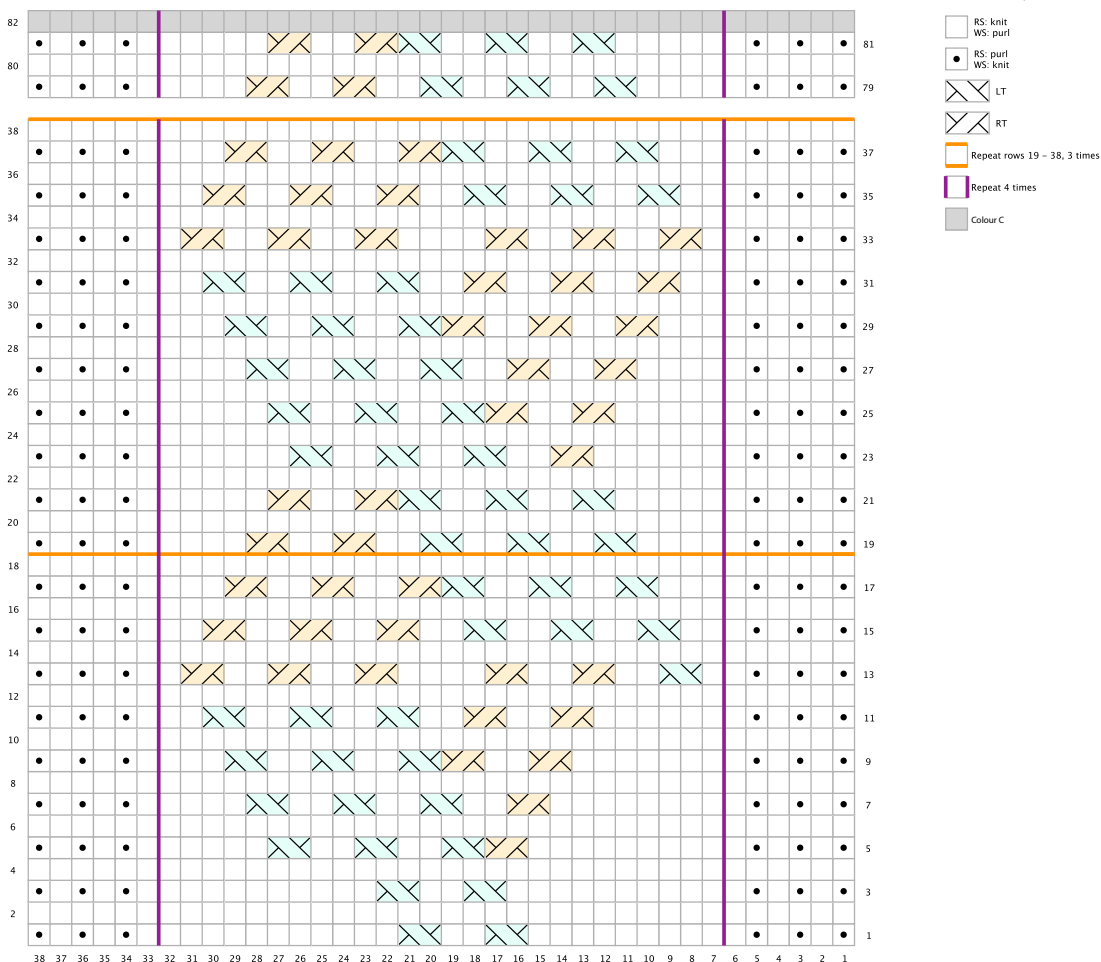


CHART B



PURE NEW WOOL

Intertek

ULAS

ISO 9001

40

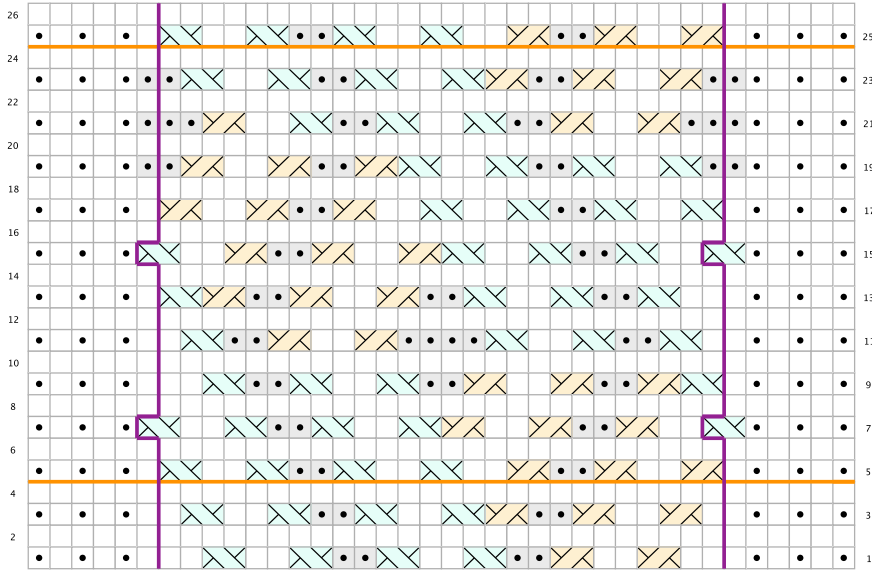
 ANOS

Rua das Cirritas, 13 - Apaviado 123 2485-059 Mira de Aire - Portugal

 Tel. +351 244 447 300 Fax +351 244 447 309

 info@rosarios4.com www.rosarios4.com

CHART C



- Key
- RS: knit
WS: purl
 - RS: purl
WS: knit
 - LT
 - RT
 - Repeat rows 5 - 24, 16 times
 - Repeat 4 times



PURE NEW WOOL



ISO 9001

40 ANOS

Rua das Cirritas, 13 - Apaviado - 123 - 2485-059 Mira de Aire - Portugal
 Tel. +351 244 447 300 - Fax +351 244 447 309
 info@rosarios4.com - www.rosarios4.com