

Rosários 4[®]

355

Autumn . Winter

Montflower Hat



BY
FÁTIMA DE HAAN

INVICTA



51% Wool



49% Acrylic

TEC

Total
Easy Care



100% Wool



WOOLMARK

Montflower Hat

355

Autumn . Winter

By Fatima de Haan

This hat has been inspired by the local area where I live. The Portuguese landscape is very diverse with interesting flora and fauna, mainly during the spring season. I am surrounded by a beautiful, exuberant, and rich variety of wildflowers and birds.

In the Winter season everyone needs one hat at the wardrobe full of colours preparing for the next season. A multicolour hat fits all pieces in a wardrobe.

YARN

2 skeins of Rosários4 **TEC** (100% wool; 50g/1.76 oz - 125m/137yds), colour A #29, grey (main colour).

1 ball of Rosários4 **INVICTA** (51% virgin wool, 49% acrylic; 150g/5.29oz - 520m/568yds), colour B #33 (contrast colour), (aprox 20 %).

GAUGE

26 sts and 26 rows = 4"/10cm in Fair Isle pat. To save time, take time to check gauge.

NEEDLES

Size US6 (4 mm) needles, DPNs, or 16" circular needles to knit in the round, or size needed to obtain gauge.

NOTIONS

Stitch markers of several colour, tapestry needle.

SIZE

M (medium woman size)

FINISHED MEASUREMENTS

Length from brim to crown: 9.5"/23 cm.

Head circumference: 18"/45.5 cm

SKILL LEVEL

Intermediate.

SPECIAL TECHNIQUES

Stranded knitting/Fair Isle

Central double decrease

INSTRUCTIONS

Note: This is a suitable project for a confident beginner or an intermediate-level knitter, knitted in the round over a chart, bottom up, from brim to crown. The chart is very easy to memorize without catching long floats and the crown decrease working in pat.

Chart is read from right to left and repeating the multiples, as indicated for the pat rep. Carefully read the instructions before to start to knit.

TIP

The floats carried in the back should not be too tight otherwise it will not stretch. Better loose than tight.

We recommend using stitch markers in the crown decrease rounds, during the first rnds dec.

PATTERNS USED

Ribbing: [K3, P1]

Chart A: (multiple of 4 sts worked in the round rep). See chart at the end.

BRIM BODY AND CROWN

With MC CO 112 sts, using your preferred cast on.

Place a marker to define the start point of each rnd. Join to knit in the rnd, carefully not twisting the sts.

BRIM

Work in pattern ribbing [K3, P1] for 1.5"/4 cm, (12 rnds) from cast on, or your desired length.

BODY

Work one rnd in st st.

Join CC and begin working from Round 1 of chart A, in the round.

Work pat rep until measure is 6"/16 cm from cast on, or your desired length, finishing with knitting Rnd 1 once.

CROWN

Decrease as follows:

Rnd 1: *K25 in pat, CDD*, rep from * around = (8 dec).

Rnd 2: K in pat (no dec).

Rnd 3: K in pat (no dec).

Rnd 4: *K23 in pat, CDD*, rep from * around = (8 dec).

Rep Rnd 2 to 4, working the CDD above of the previous one, until 16 sts rem on the needles.

FINISHING

Cut the working yarn leaving a tail, approx. 6"/15 cm. With a tapestry needle pull it tight through remaining stitches, twice, to close and secure the hole of the crown.

Weave in ends, block and enjoy!

ABBREVIATIONS

BO: Bind Off.

CDD: (central double decrease) - slip the next two stitches of the left needle together as if to knit, k1, then pass the slipped stitches over = 2 sts dec.

CO: Cast On.

CC: Contrast Colour

k: knit

K2tog: Knit two together. Right slanting decrease.

MC: Main Colour

pm: place a marker

rem: remains

rep: repeat

RS: Right side

st st: stockinette stitch.

st(s): stitch(es)

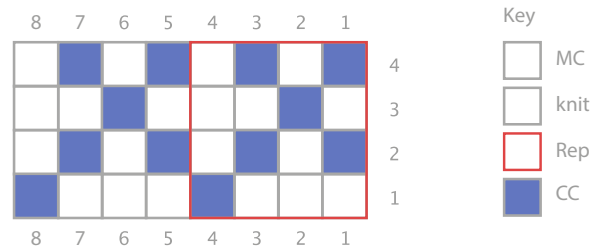


40
ANOS

355

Autumn . Winter

CHART



SUPPORT

Where can I find this yarn? Send an email to:

geral@rosarios4.com

If you need help with this pattern, please send an email to:

fatimadehaan23@gmail.com

We love to see your garments; share them on social media using:

#ROSARIOS4 #MONTFLOWERHAT #ROSARIOS4TEC #ROSARIOS4INVICTA



PURE NEW WOOL



ISO 9001

40
ANOS

Rua das Grúas, 13 - Apartado 123 2485-059 Mira de Aire - Portugal
Tel. +351 244 447 300 Fax +351 244 447 309
info@rosarios4.com www.rosarios4.com



TEC Colour 06
(100% wool)



INVICTA Colour 13
(51% wool; 49% acrylic)