

Rosários 4[®]

351

Kids Collection

Gaiato baby cardigan



MERINO LAND



100% Merino
Wool
Superwash



100% Natural
Origin Fibres



PURE NEW WOOL

DESIGN
FILIPA CARNEIRO
@ fillpa_nionoi

Gaiato baby cardigan

351

Kids Collection

YARN

2 balls of **MERINO LAND** from Rosários 4 (100% merino wool; 50 g/220 m).

GAUGE

26 sts and 52 rows - 10x10 cm in garter stitche with 3 mm needle, washed and blocked (*it's important to wash and block your swatch in order to get the correct gauge*).

NEEDLES

3 mm needles (*if necessary, adjust the needle size to match the gauge*).

NOTIONS

Stitch markers, tapestry needle, waste yarn, 3 small buttons.

SIZES

Newborn.

FINISHED MEASUREMENTS

34 cm final bust measurements; 20 cm height.

INSTRUCTIONS

This cardigan is knitted from side to side, starting at the left front and ending at the right front. Knitted entirely in garter stitch and shaped with short rows. On the collar and cuffs we will work an i-cord selvage. A fun construction that surprises for its simplicity. In the end, we finish off with a small seam on each of the sleeves. If you prefer to knit this cardigan in the Portuguese technique, just follow the same instructions, but always purling (instead of knitting).

LEFT FRONT

Long tail cast on 57 sts. Work the button band in garter stitch and with an i-cord selvage in the neckline:

Row 1 (WS): sl3 wyif, k to end.

Row 2 (RS): k to end.

Row 3: sl3 wyif, k to end.

Work the buttonholes:

Row 4 (RS): k21, yo, k2tog, [k13, yo, k2tog] x 2, k4.

Work the front with the cables pattern:

Row 5 (WS): sl3 wyif, k to end.

Row 6 (RS): k35, **pm**, [chart A - row 1], **pm**, k5, **pm**, k5, **pm**, k6.

Row 7: sl3 wyif, k3, slm, (k to marker, slm) x 2, [chart A - row 2], slm, k to end.

Row 8: k to marker, slm, [chart A - row 3], slm, (k to marker, slm) x 2, k to end.

Row 9: sl3 wyif, k3, slm, (k to marker, slm) x 2, [chart A - row 4], slm, k to end.

Work in short-rows:

Note: do not pick up the w+t when you reach them. Work wrapped sts as single sts.

Row 1 (RS): k to 1 st before marker, w+t.

Row 2 (WS): k to end.

Row 3: k to marker, slm, [chart A], slm, k to 1 st before marker, w+t.

Row 4: k to marker, slm, [chart A], slm, k to end.

Row 5: k to marker, slm, [chart A], slm, k to marker, slm, k to 1 st before marker, w+t.

Row 6: (k to marker, slm) x 2, [chart A], slm, k to end.

Row 7: k to marker, slm, [chart A], slm, (k to marker, slm) x 2, k to end.

Row 8: sl3 wyif, k3, slm, (k to marker, slm) x 2, [chart A], slm, k to end.

Repeat rows 1 to 8, 5 more times. The front measures approx. 11 cm from cast-on, on the widest point.

LEFT SLEEVE

Cast on sts for the sleeve:

Row 1 (RS): k to 6 sts before marker and slip these sts to waste yarn and leave on hold, k6, slm, [chart A], slm, (k to marker, slm) x 2, k to end.

Row 2 (WS): sl3 wyif, k3, slm, (k to marker, slm) x 2, [chart A], slm, k6, backwards loop cast on 27 sts. [55 sts]

Work the sleeve with i-cord selvage on both the neckline and the wrist:

Row 3: k to marker, slm, [chart A], slm, (k to marker, slm) x 2, k to end.

Row 4: sl3 wyif, k3, slm, (k to marker, slm) x 2, [chart A], slm, k to 3 sts from end, sl3 wyif.

Repeat rows 3 and 4, once more.

Work in short rows:

Row 1 (RS): k to 1 st before marker, w+t.

Row 2 (WS): k to 5 sts from end, w+t.

Row 3: k to marker, slm, [chart A], slm, k to 1 st before marker, w+t.

Row 4: k to marker, slm, [chart A], slm, k to 3 sts from end, sl3 wyif.

Row 5: k to marker, slm, [chart A], slm, k to marker, slm, k to 1 st before marker, w+t.

Row 6: (k to marker, slm) x 2, [chart A], slm, k to 5 sts from end, w+t.

Row 7: k to marker, slm, [chart A], slm, (k to marker, slm) x 2, k to end.

Row 8: sl3 wyif, k3, slm, (k to marker, slm) x 2, [chart A], slm, k to 3 sts from end, sl3 wyif.

Repeat rows 1 to 8, 8 more times.

Row 9: k to marker, slm, [chart A], slm, (k to marker, slm) x 2, k to end.

Row 10: sl3 wyif, k3, slm, (k to marker, slm) x 2, [chart A], slm, k to 3 sts from end, sl3 wyif.

Repeat rows 1 and 2 once more

The sleeve measures approx. 15 cm from cast-on.

Bind off sleeve sts:

Row 1 (RS): bind off 27 sts, k6, slm, [chart A], slm, (k to marker, slm) x 2, k6.

Row 2 (WS): sl3 wyif, k3, slm, (k to marker, slm) x 2, [chart A], slm, k6, place the 29 sts on hold back on the needle and knit to end. [57 sts].





BACK

Work in short-rows with i-cord selvage on the neckline:

Row 1 (RS): k to 1 st before marker, w+t.

Row 2 (WS): k to end.

Row 3: k to marker, slm, [chart A], slm, k to 1 st before marker, w+t.

Row 4: k to marker, slm, [chart A], slm, k to end.

Row 5: k to marker, slm, [chart A], slm, k to marker, slm, k to 1 st before marker, w+t.

Row 6: (k to marker, slm) x 2, [chart A], slm, k to end.

Row 7: k to marker, slm, [chart A], slm, (k to marker, slm) x 2, k to end.

Row 8: sl3 wyif, k3, slm, (k to marker, slm) x 2, [chart A], slm, k to end.

Repeat rows 1 to 8, 11 more times. Back measures approx. 18 cm from sleeve separation.

RIGHT SLEEVE

Work the right sleeve exactly as for the left sleeve, repeating the instructions.

RIGHT FRONT

Work in short-rows with i-cord selvage on the neckline:

Row 1 (RS): k to 1 st before marker, w+t.

Row 2 (WS): k to end.

Row 3: k to marker, slm, [chart A], slm, k to 1 st before marker, w+t.

Row 4: k to marker, slm, [chart A], slm, k to end.

Row 5: k to marker, slm, [chart A], slm, k to marker, slm, k to 1 st before marker, w+t.

Row 6: (k to marker, slm) x 2, [chart A], slm, k to end.

Row 7: k to marker, slm, [chart A], slm, (k to marker, slm) x 2, k to end.

Row 8: sl3 wyif, k3, slm, (k to marker, slm) x 2, [chart A], slm, k to end.

Repeat rows 1 to 8, 5 more times.

Work the button band with i-cord selvage on the neckline:

Row 1 (RS): k to marker, slm, [chart A], slm, (k to marker, slm) x 2, k6.

Row 2 (WS): sl3 wyif, k3, slm, (k to marker, slm) x 2, [chart A], slm, k to end.

Row 3: k to marker, slm, [chart A], slm, (k to marker, slm) x 2, k to end.

Row 4: sl3 wyif, k3, slm, (k to marker, slm) x 2, [chart A], slm, k to end.

Row 5: k to marker, slm, [chart A], slm, (k to marker, slm) x 2, k6.

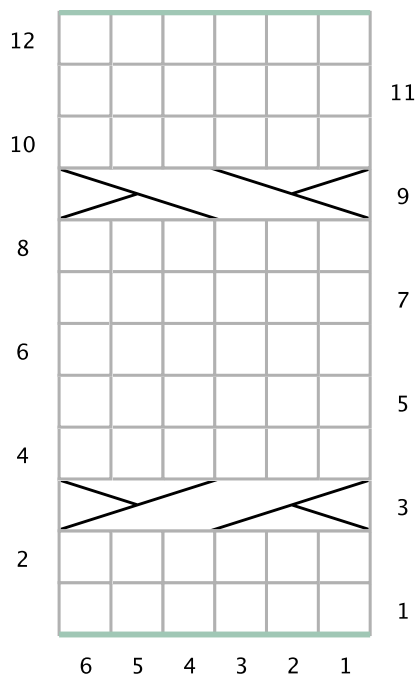
Row 6: sl3 wyif, k to end.

Row 7: k to end.

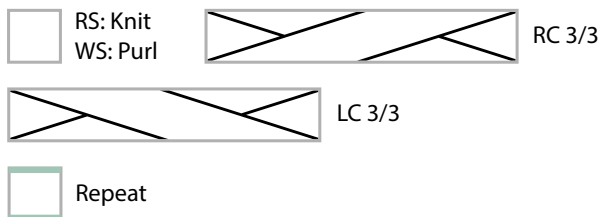
Row 8: sl3 wyif, k to end.

Bind off all sts.

CHART A:



Key

**Written instruction:****Row 1 (RS):** k6.**Row 2 and all WS rows:** p6.**Row 3:** RC 3/3.**Rows 5 and 7:** k6.**Row 9:** LC 3/3.**Row 11:** k6.

VIDEO SUPPORT

[Wrap and turn short-rows](#)

SUPPORT

Where can I find this yarn? Send an email to:

geral@rosarios4.com

If you need help with this pattern, please send an email to:

filipa@filipacarneiro.com

We love to see your garments; share them on social media using:

#ROSARIOS4 #FILIPACARNEIRO #VINTAGEBABYCARDIGAN
#ROSARIOS4MERINOLAND

FINISHING

Sew the sleeves: finish the sleeve sewing the cast-on with the bind-off edges together, from the RS, with the tapestry needle and working yarn. Begin sewing on the wrist and finish off on the armhole for a better finish. Weave in all ends with a tapestry needle. Sew buttons in place, opposite to where the buttonholes fall. Wash carefully with mild soap. Block garment to final measurements.

ABBREVIATIONS

K: knit**P:** purl**cm:** centimeters**st/sts:** stitch/stitches**Rep:** repeat**approx.:** approximately**RS:** right side**WS:** wrong side**pm:** place marker**slm:** slip marker**k2tog:** knit 2 stitches together**Sl3 wyif:** slip 3 sts purlwise and with the yarn in front of the work**RC3/3:** 6 sts right cable (slip 3 sts to cable needle and place at **back** of the work, knit 3 sts, knit 3 sts from the cable needle)**LC3/3:** 6 sts left cable (slip 3 sts to cable needle and place in **front** of the work, knit 3 sts, knit 3 sts from the cable needle)**w+t:** wrap and turn

In garter stitch (knitting all rows): knit to the turning point, slip the first stitch purlwise with yarn in front and bring yarn to the front of work. Place the slipped st back on left hand needle, turn the work and knit.



MERINO LAND Colour 35
(100% merino wool)

