

N.º 366

Rosários 4[®]

Autumn/Winter Collection

Autumn/Winter Collection

MUSGO VEST

DESIGN:

Filipa Carneiro
@filipa_nionoi



REAL MERINO



100% SUPERWASH MERINO WOOL



MUSGO VEST

SIZES: XS/S, M/L, XL/XXL.



REAL MERINO



100% SUPERWASH MERINO WOOL

LIGEIRO/LIGHT
LIGERO



100g
(3.50 oz)

290

METROS

317

YARDS

YARN

3 (3, 4) balls of **REAL MERINO** from Rosários 4, **color 07** (100% superwash merino wool; 100g/290m) - **color A**.

1 ball of **REAL MERINO** from Rosários 4, **color 03** (100% superwash merino wool; 100g/290m) - **color B**.

GAUGE

24 sts and 34 rows - 10x10 cm in stockinette stitch with 3.5 mm, washed and blocked (it's important to wash and block your swatch in order to get the correct gauge).

NEEDLES

3 and 3.5 mm circular needles with 100 cm cable (if necessary, adjust the needle size to match the gauge).

NOTIONS

Tapestry needle, stitch markers, waste yarn, 5 buttons (18 a 20 mm).

SIZES

XS/S, M/L, XL/XXL.

FINISHED MEASUREMENTS

84 (101, 119) cm final bust measurements (refer to the schematic for more measurements); measures with approx. 2 to 6 cm of negative ease.

This vest is knitted from the top down and seamless. We start by knitting the fronts down to the armhole. Then we pick up stitches on the shoulders and work the back to the armhole. At this time, we join fronts and back on the needles and work the body. To work the button bands we pick up stitches along the selvages of the fronts. At the end, we work the pocket and sew it to the left front of the vest. The button bands and the pocket are knitted using 2 colors and in an "illusion" pattern.



INSTRUCTIONS

RIGHT FRONT

With color A and bigger needle, cast on 20 (22, 24) sts. Work in stockinette stitch with i-cord selvages:

Row 1 (RS): k3, p2, k to 5 sts from end, p2, k3.

Row 2 (WS): sl3 wyif, k2, p to 5 sts from end, k2, sl3 wyif.

Repeat rows 1 and 2 once.

Work neckline increases:

Row 1 (RS): k3, p2, k to 5 sts from end, **M1L**, p2, k3. [inc 1 st]

Row 2 (WS): sl3 wyif, k2, p to 5 sts from end, k2, sl3 wyif.

Row 3: k3, p2, k to 5 sts from end, p2, k3.

Row 4: sl3 wyif, k2, p to 5 sts from end, k2, sl3 wyif.

Repeat rows 1 to 4, 13 (13, 11) more times. [34 (36, 36) sts]

Continue neckline increases and work armhole increases every 2 rows:

Row 1: k3, p2, **M1R**, k to 5 sts from end, **M1L**, p2, k3. [inc 2 sts]

Row 2: sl3 wyif, k2, p to 5 sts from end, k2, sl3 wyif.

Row 3: k3, p2, **M1R**, k to 5 sts from end, p2, k3. [inc 1 st]

Row 4: sl3 wyif, k2, p to 5 sts from end, k2, sl3 wyif.

Repeat rows 1 to 4, 1 (4, 6) more times.

Next row: k3, p2, **M1R**, k to 5 sts from end, **M1L**, p2, k3. [inc 2 sts]

WS row: sl3 wyif, k2, p to 5 sts from end, k2, sl3 wyif. [42 (53, 59) sts]

Continue neckline increases and work armhole increases every row:

Row 1: k3, p2, **M1R**, k to 5 sts from end, p2, k3. [inc 1 st]

Row 2: sl3 wyif, k2, p to 5 sts from end, **M1Rp**, k2, sl3 wyif. [inc 1 st]

Row 3: k3, p2, **M1R**, k to 5 sts from end, **M1L**, p2, k3. [inc 2 sts]

Row 4: sl3 wyif, k2, p to 5 sts from end, **M1Rp**, k2, sl3 wyif. [inc 1 st]

Repeat rows 1 to 4, 0 (0, 1) more time. [47 (58, 69) sts]

Place a removal marker on the last neckline increase.

Continue the armhole increases every row:

Row 1: k3, p2, **M1R**, k to 5 sts from end, p2, k3. [in 1 st]

Row 2: sl3 wyif, k2, p to 5 sts from end, **M1R**, k2, sl3 wyif. [49 (60, 71) sts]

Leave sts on hold while working left front and back pieces.

LEFT FRONT

With color A and bigger needle, cast on 20 (22, 24) sts. Work in stockinette stitch with i-cord selvages:

Row 1 (RS): k3, p2, k to 5 sts from end, p2, k3.

Row 2 (WS): sl3 wyif, k2, p to 5 sts from end, k2, sl3 wyif.

Repeat rows 1 and 2 once.

Work the neckline increases:

Row 1 (RS): k3, p2, **M1R**, k to 5 sts from end, p2, k3. [inc 1 st]

Row 2 (WS): sl3 wyif, k2, p to 5 sts from end, k2, sl3 wyif.

Row 3: k3, p2, k to 5 sts from end, p2, k3.

Row 4: sl3 wyif, k2, p to 5 sts from end, k2, sl3 wyif.

Repeat rows 5 to 8, 13 (13, 11) more times. [34 (36, 36) sts]

Continue the neckline increases and work armhole increases every 2 rows:

Row 1: k3, p2, **M1R**, k to 5 sts from end, **M1L**, p2, k3. [inc 2 sts]

Row 2: sl3 wyif, k2, p to 5 sts from end, k2, sl3 wyif.

Row 3: k3, p2, k to 5 sts from end, **M1L**, p2, k3. [inc 1 st]

Row 4: sl3 wyif, k2, p to 5 sts from end, k2, sl3 wyif.

Repeat rows 1 to 4, 1 (4, 6) more times.

Next row: k3, p2, **M1R**, k to 5 sts from end, **M1L**, p2, k3. [inc 2 sts]

WS row: sl3 wyif, k2, p to 5 sts from end, k2, sl3 wyif. [42 (53, 59) sts]

Continue the neckline increases and work armhole increases every row:

Row 1: k3, p2, k to 5 sts from end, **M1L**, p2, k3. [inc 1 st]

Row 2: sl3 wyif, k2, **M1Lp**, p to 5 sts from end, k2, sl3 wyif. [inc 1 st]

Row 3: k3, p2, **M1R**, k to 5 sts from end, M1L, p2, k3. [inc 2 sts]

Row 4: sl3 wyif, k2, **M1Lp**, p to 5 sts from end, k2, sl3 wyif. [inc 1 st]

Repeat rows 1 to 4, 0 (0, 1) more time. [47 (58, 69) sts]

Place a removal marker on the last neckline increase.

Continue armhole increases every row:

Row 1: k3, p2, k to 5 sts from end, M1L, p2, k3. [48 (59, 70) sts]

Row 2: sl3 wyif, k2, **M1Lp**, p to 5 sts from end, k2, sl3 wyif. [49 (60, 71) sts]

Leave sts on hold while working the back.

BACK

With color A and bigger needle, pick up and knit 20 (22, 24) sts over the sts of the left shoulder, i-cord cast on 38 (40, 42) sts as follows: place the last 3 sts back to the left needle, [**Kfb**, k2; place the last 3 sts back to left-hand needle] rep 37 (39, 41) more times; slip the 3 sts from left-hand needle to a safety pin (or waste yarn) and leave on hold; cut the yarn leaving a 30 cm tail; join a new strand of yarn, skip the 3 i-cord sts and pick up and knit 17 (19, 21) sts over the sts on the right shoulder. Total of 72 (78, 84) sts on the needles.

Work in stockinette stitch with i-cord selvages:

Row 1 (WS): sl3 wyif, k2, p to 5 sts from end, k2, sl3 wyif.

Row 2 (RS): k3, p2, k to 5 sts from end, p2, k3.

Row 3 (WS): sl3 wyif, k2, p to 5 sts from end, k2, sl3 wyif.

Repeat rows 2 and 3, 29 (29, 25) more times, working a total of 60 (60, 52) rows.

Work armhole increases every 2 rows:

Row 1: k3, p2, **M1R**, k to 5 sts from end, M1L, p2, k3. [inc 2 sts]

Row 2: sl3 wyif, k2, p to 5 sts from end, k2, sl3 wyif.

Repeat rows 1 and 2, 4 (10, 14) more times. [82 (100, 114) sts]

Work armhole increases every row:

Row 1: k3, p2, **M1R**, k to 5 sts from end, M1L, p2, k3. [inc 2 sts]

Row 2: sl3 wyif, k2, **M1Lp**, p to 5 sts from end, **M1Rp**, k2, sl3 wyif. [inc 2 sts]

Repeat rows 1 and 2, 2 (2, 4) more times. [94 (112, 134) sts]

Leave all sts on the needles.

BODY

JOIN FRONTS AND BACK: place onto the left-hand needle the left front sts on hold and work as follows: k3, p2, k to end; pm; knit the back sts; pm; place the right front sts onto the left-hand needle and work as follows: k to 5 sts from end, p2, k3. [192 (232, 276) sts]

WS row: sl3 wyif, k2, p to 5 sts from end, k2, sl3 wyif.

Work body increases:

Rows 1 (RS): k3, p2, k to 5 sts from end, p2, k3.

Rows 2 (WS): sl3 wyif, k2, p to 5 sts from end, k2, sl3 wyif.

Repeat rows 1 and 2 twice more.

Row 7: k3, p2, k to 1 st before marker, M1L, k1, pmarc, k1, **M1R**, k to 1 st before marker, M1L, k1, pmarc, k1, **M1R**, k to 5 sts from end, p2, k3. [inc 4 sts]

Row 8: sl3 wyif, k2, p to 5 sts from end, k2, sl3 wyif.

Repeat rows 1 to 8, 9 (10, 11) more times. [232 (276, 324) sts on body; 59 (71, 83) sts on fronts; 114 (134, 158) sts on back]

Work in stockinette stitch with i-cord selvages:

Row 1 (RS): k3, p2, k to 5 sts from end, p2, k3.

Row 2 (WS): sl3 wyif, k2, p to 5 sts from end, k2, sl3 wyif.

Repeat rows 1 and 2, 3 (3, 4) more times.

Change to smaller needle and work the ribbing:

Row 1 (RS): k3, p2, (k2, p2) rep to 3 sts from end, k3.

Row 2 (WS): sl3 wyif, k2, (p2, k2) rep to 3 sts from end, sl3 wyif.

Repeat rows 1 and 2, 5 more times. Bind off all sts in ribbing pattern.

BUTTON BANDS

LEFT FRONT

With smaller needle and color A, begin at the height where you have placed the removal stitch marker (last neckline increase), pick up and knit 67 (75, 83) sts along the left front. Pick up the stitches along the column of knit sts on the wrong side, just after the i-cord selvage (pick up approx. 2 sts every 3 rows). Work the WS row: knit all sts.

Join color B and work in illusion pattern following chart A or following written instructions:

Row 1, color B (RS): k to end.

Row 2, color B (WS): k1, (p4, k1, p3) x 8 (9, 10), p1, k1.

Row 3, color A: k to end.

Row 4, color A: k1, (k4, 1L, k3) x 8 (9, 10), k2.

Row 5, color B: k to end.

Row 6, color B: k1, (p3, k3, p2) x 8 (9, 10), p1, k1.

Row 7, color A: k to end.

Row 8, color A: k1, (k3, p3, k2) x 8 (9, 10), k2.

Row 9, color B: k to end.

Row 10, color B: k1, (p2, k5, p1) x 8 (9, 10), p1, k1.

Row 11, color A: k to end.

Row 12, color A: k1, (k2, p5, k1) x 8 (9, 10), k2.

Row 13, color B: k to end.

Row 14, color B: k1, (p1, k7) x 8 (9, 10), p1, k1.

Row 15, color A: k to end.

Bind off all sts knitwise.

RIGHT FRONT

With smaller needle and color A, begin in the bind-off edge and pick up and knit 67 (75, 83) sts along the right front until the height where you have the removal stitch marker (last neckline increase). Pick up the stitches along the column of knit sts on the wrong side, just after the i-cord selvage (pick up approx. 2 sts every 3 rows). Work the WS row: knit all sts.

Join color B and work in illusion pattern following chart A or following written instructions:

Note: if you chose to follow chart A, please refer to the written instructions on rows 7 and 8 for the buttonholes directions.

Row 1, color B (RS): k to end.

Row 2, color B (WS): k1, (p4, k1, p3) x 8 (9, 10), p1, k1.

Row 3, color A: k to end.

Row 4, color A: k1, [k4, p1, k3] x 8 (9, 10), k2.

Row 5, color B: k to end.

Row 6, color B: k1, [p3, k3, p2] x 8 (9, 10), p1, k1.

Row 7, color A, buttonholes: k5, bind off 2 sts, [k12 (14, 16), bind off 2 sts] x 4, k4.

Size XS/S

Row 8, color A: k4, cast on 2 sts, p1, k5, p3, k3, cast on 2 sts, p3, k6, p3, cast on 2 sts, k3, p3, k5, p1, cast on 2 sts, k4, p3, k5, cast on 2 sts, p1, k4.

Size M/L

Row 8, color A: k4, [cast on 2 sts, p1, k5, p3, k5] x 4, cast on 2 sts, p1, k4.

Size XL/XXL

Row 8, color A: k4, cast on 2 sts, p1, k5, p3, k5, p2, cast on 2 sts, k4, p3, k5, p3, k1, cast on 2 sts, k2, p3, k5, p3, k3, cast on 2 sts, [p3, k5] x 2, cast on 2 sts, p1, k4.

Row 9, color B: k to end.

Row 10, color B: k1, [p2, k5, p1] x 8 (9, 10), p1, k1.

Row 11, color A: k to end.

Row 12, color A: k1, [k2, p5, k1] x 8 (9, 10), k2.

Row 13, color B: k to end.

Row 14, color B: k1, [p1, k7] x 8 (9, 10), p1, k1.

Row 15, color A: k to end.

Bind off all sts knitwise.

POCKET

With smaller needle and color A cast on 41 sts. Work in illusion pattern following chart B or following written instructions:

Row 1, color A (RS): k to end.

Row 2, color A (WS): sl3 wyif, k to end.

Row 3, color B: k to end.

Row 4, color B: sl3 wyif, [p6, k1, p5] x 3, p1, k1.

Row 5, color A: k to end.

Row 6, color A: sl3 wyif, [k6, 1L, k5] x 3, k2.

Row 7, color B: k to end.

Row 8, color B: sl3 wyif, [p5, k3, p4] x 3, p1, k1.

Row 9, color A: k to end.

Row 10, color A: sl3 wyif, [k5, p3, k4] x 3, k2.

Row 11, color B: k to end.

Row 12, color B: sl3 wyif, [p4, k5, p3] x 3, p1, k1.

Row 13, color A: k to end.

Row 14, color A: sl3 wyif, [k4, p5, k3] x 3, k2.

Row 15, color B: k to end.

Row 16, color B: sl3 wyif, [p3, k7, p2] x 3, p1, k1.

Row 17, color A: k to end.

Row 18, color A: sl3 wyif, [k3, p7, k2] x 3, k2.

Row 19, color B: k to end.

Row 20, color B: sl3 wyif, [p2, k9, 1L] x 3, p1, k1.

Row 21, color A: k to end.

Row 22, color A: sl3 wyif, [k2, p9, k1] x 3, k2.

Row 23, color B: k to end.

Row 24, color B: sl3 wyif, [p1, k11] x 3, p1, k1.

Row 25, color A: k to end.

Row 26, color A: sl3 wyif, (p1, k11) x 3, p1, k1.

Row 27, color B: k to end.

Row 28, color B: sl3 wyif, (k2, p9, k1) x 3, k2.

Row 29, color A: k to end.

Row 30, color A: sl3 wyif, (p2, k9, 1L) x 3, p1, k1.

Row 31, color B: k to end.

Row 32, color B: sl3 wyif, (k3, p7, k2) x 3, k2.

Row 33, color A: k to end.

Row 34, color A: sl3 wyif, (p3, k7, p2) x 3, p1, k1.

Row 35, color B: k to end.

Row 36, color B: sl3 wyif, (k4, p5, k3) x 3, k2.

Row 37, color A: k to end.

Row 38, color A: sl3 wyif, (p4, k5, p3) x 3, p1, k1.

Row 39, color B: k to end.

Row 40, color B: sl3 wyif, (k5, p3, k4) x 3, k2.

Row 41, color A: k to end.

Row 42, color A: sl3 wyif, (p5, k3, p4) x 3, p1, k1.

Row 43, color B: k to end.

Row 44, color B: sl3 wyif, (k6, 1L, k5) x 3, k2.

Rows 45 to 70: rep rows 1 to 26.

Bind off all sts. Cut the yarn leaving a tail long enough to sew the pocket to the garment. With tapestry needle sew the around the edges of the pocket, leaving the i-cord edge open.

FINISHING

Weave in all ends with a tapestry needle. Wash carefully with mild soap. Block garment to final measurements.

CHART A

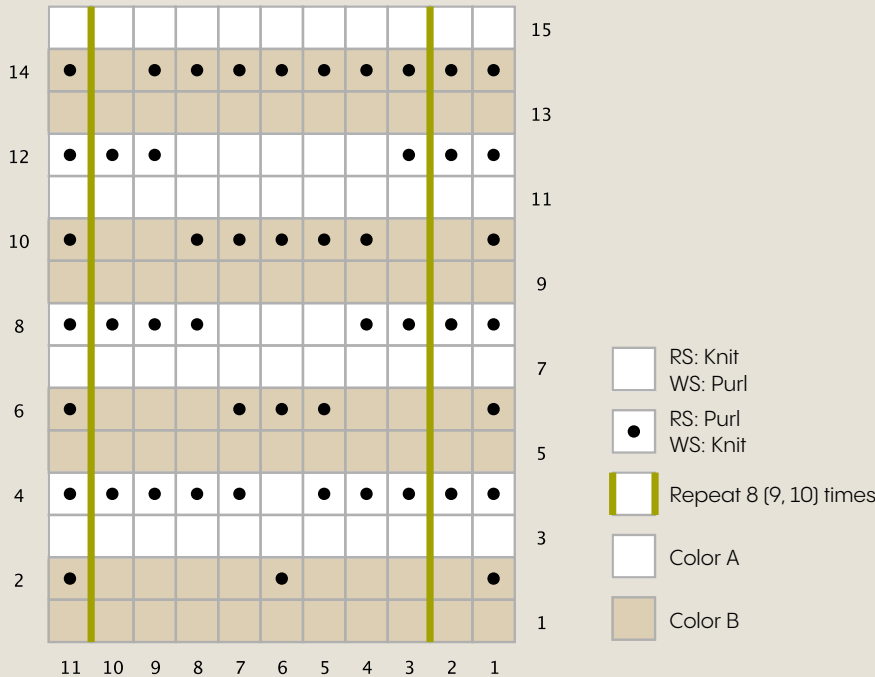
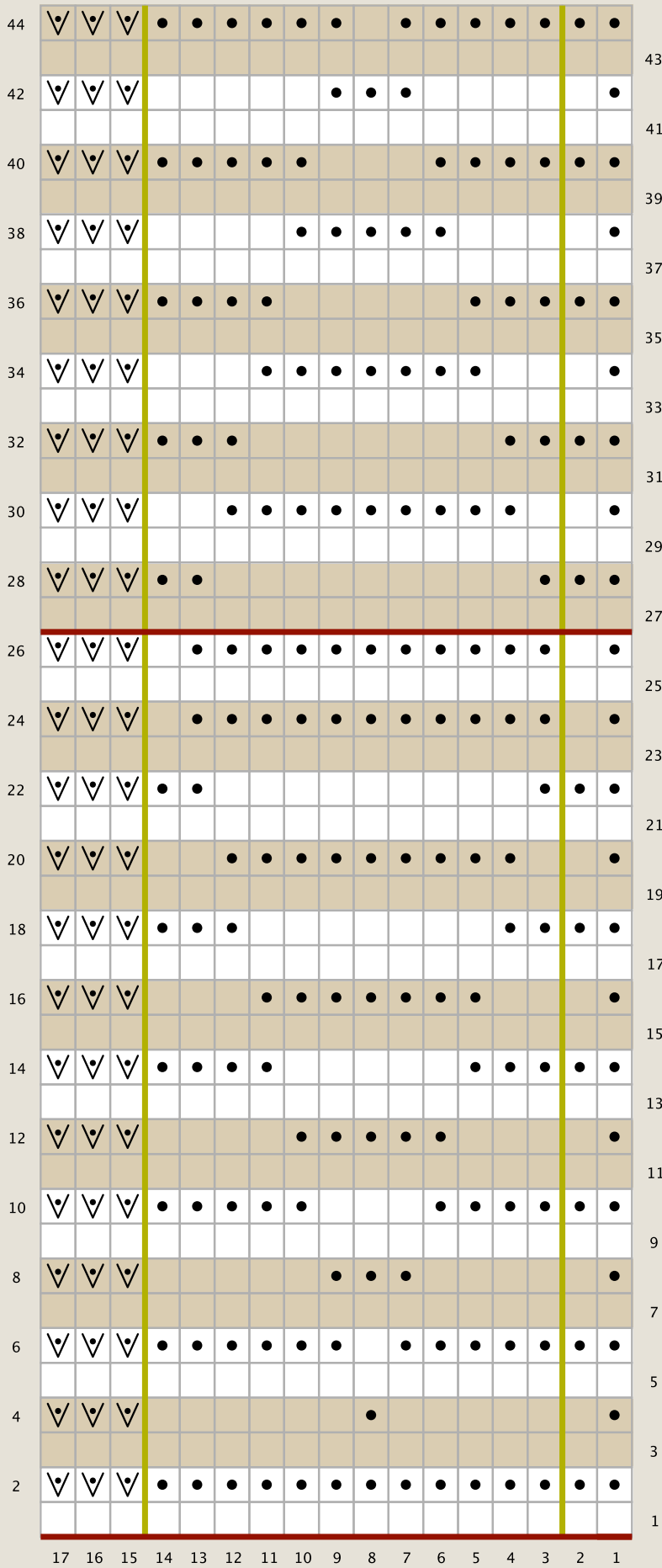


CHART B



- RS: Knit
WS: Purl
- RS: Purl
WS: Knit
- Sl1 wyif
- Repeat 8 (9, 10) times
- Color A
- Color B
- Rows 45 to 70,
repeat rows 1 to 26

ABBREVIATIONS

- K** knit
P purl
cm centimeters
st/sts stitch/stitches
rep repeat
approx approximately
rnd/rnds round/rounds
RS right side
WS wrong side
pm place marker
slm slip marker
- Sl3 wyif** slip 3 sts purlwise and with the yarn in front of the work
- Kfb** knit front and back (knit 1 stitch but don't drop it off left hand needle; knit the same stitch again through back loop and drop it off the needle)
- M1L** make one left (insert the left-hand needle, from front to back, under the strand of yarn that runs between the stitch just worked and the next stitch on the left-hand needle. Knit this st through the back loop)
- M1Lp** make one left purl (insert the left-hand needle, from front to back, under the strand of yarn that runs between the stitch just worked and the next stitch on the left-hand needle. Purl this st through the back loop)
- M1R** make one right (insert the left-hand needle, from back to front, under the strand of yarn that runs between the stitch just worked and the next stitch on the left-hand needle. Knit this st through the front loop)
- M1Rp** make one right purl (insert the left-hand needle, from back to front, under the strand of yarn that runs between the stitch just worked and the next stitch on the left-hand needle. Purl this st through the front loop)
- Stockinette stitch: knit all right side rows and purl all wrong side rows (in the round: knit all rounds)



SUPPORT VIDEOS

KAL Musgo vest

PATTERN SUPPORT

If you need help with this pattern, please email me at:

filipa@filipacarneiro.com

I would love to see the progress of your work and the final garment, please share your photos on social media using:

#MUSGOVEST #FILIPACARNEIRODESIGNS #ROSARIOS4REALMERINO

YARN

Where can I find this yarn? Send an email to:

geral@rosarios4.com



Rua das Grutas, 13
Apartado 123
2485-059 Mira de Aire
PORTUGAL
Tel. +351 244 447 300
info@rosarios4.com

www.rosarios4.com



Rosários 4.