

# Rosários 4<sup>®</sup>

257

Spring . Summer

Rosal



DESIGN  
FILIPA CARNEIRO

BIO LOVE



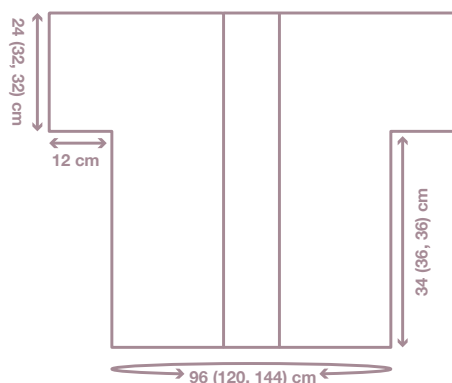
100% Organic  
Cotton



100% Natural  
Origin Fibres



## Rosal



## GAUGE

29 sts and 8 rows – 12 x 8 cm in lace stitch pattern (**chart A**) with 3 mm hook, washed and blocked (*it's important to wash and block your swatch in order to get the correct gauge*).

## YARN

5 (7, 8) skeins of Bio Love from Rosários 4, in colour 06 (100% organic cotton, 50g/175m).

## NEEDLES

3,0 mm crochet hook (*if necessary, adjust the needle size to match the gauge*).

## NOTIONS

Tapestry needle.

## SIZES

XS/S, M/L, XL/XXL

## FINISHED MEASUREMENTS

96 (120; 144) cm final bust measurements (*refer to schematic for more measurements*) – **approx. 20 cm of positive ease included.**

## INSTRUCTIONS

## BACK

Work 114 (142, 170) ch sts and work bottom hem:

**Row 1:** 1sc in 2nd ch, 1sc in each ch to end. [113 (141, 169) sts]

**Row 2:** 1ch, 1sc in each st. [113 (141, 169) sts]

Work lace pattern following **chart A** with **7 (9, 11) repeats** of the marked area.

Repeat the 8 rows of chart A, 3 (4, 4) more times (a total of 4 (5, 5) repeats of chart). Back piece should measure approx. 34 (36, 36) cm height. Leave on hold without binding off or cutting the yarn.

## SLEEVES

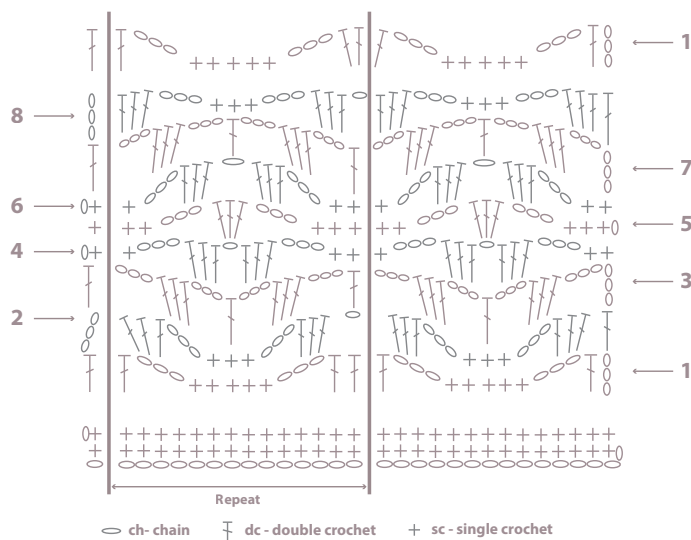
1 – with a new strand of yarn and with RS facing, join yarn in top left corner and ch28. Work an extra ch, pull the yarn through to close and cut strand.

2 – Go back to the back piece left on hold and ch28 [169 (197, 225) sts on back].

Continue working in lace pattern following **chart A** or corresponding written instruction, but now with **11 (13, 15) repeats** of marked area.

Repeat all 8 rows of chart A, 3 (4, 4) times. Sleeve should measure approx. 24 (32, 32) cm height. At this moment we leave the 27 middle sts without work (for back neck) and continue working on the front pieces.

## CHART A



## RIGHT FRONT

Continue working in lace pattern following **chart A** or corresponding written instruction, but now with **4 (5, 6) repeats** of marked area – [71 (85, 99) pts in right front]. Repeat all 8 rows of chart A, 3 (4, 4) times.

Work 28 slip sts to skip sleeve sts – [43 (57, 71) sts in front].

Continue working in lace pattern following **chart A** or corresponding written instruction, but now with **2 (3, 4) repeats** of marked area. Repeat all 8 rows of chart A, 4 (5, 5) times.

Work bottom hem:

**Rows 1 and 2:** ch1, 1sc in each st to end of row.

## LEFT FRONT

Join a new strand of yarn and with RS facing, start working left front piece being sure to leave 27 sts unworked from right front edge – [71 (85, 99) sts in left front].

Continue working in lace pattern following **chart A** or corresponding written instruction, but now with **4 (5, 6) repeats** of marked area. Repeat all 8 rows of chart A, 3 (4, 4) times.

At this moment, leave the last 28 sts unworked and continue working in lace pattern following **chart A** or corresponding written instruction, but now with **2 (3, 4) repeats** of marked area – [43 (57, 71) sts in front].

Repeat all 8 rows of chart A, 4 (5, 5) times.

Work bottom hem:

**Rows 1 and 2:** ch1, 1sc in each st to end of row.

## FINISHING

Join side and sleeve seams with main yarn.

**SLEEVE EDGING:** star in seam, work 108 (144, 144) sc around sleeve edge (approx. 18 sts for every chart repeat, that means, for every 8 rows). Join to first st with slip st and cut yarn. Repeat for the other sleeve.

**FRONT EDGING:** work 284 (356, 356) sc along right front edge, back neck sts and left front edge (1 st for every single crochet rows on the bottom hem; approx. 18 sts for every chart repeat, that means, for every 8 rows; plus, the 27 sts on back neck opening). Cut yarn.

Weave in all ends and wet block your garment to finished measurements.

## ABBREVIATIONS

**ch:** chain stitch

**sc:** single crochet

**dc:** double crochet

**st/sts:** stitch/stitches

**approx.:** approximately

**RS:** right side







PURE NEW WOOL



ISO 9001

40  
ANOS

Rua das Grutas, 13 - Apartado 123 2485-059 Mira de Aire - Portugal  
Tel. +351 244 447 300 Fax +351 244 447 309  
info@rosarios4.com www.rosarios4.com

### CHART A – written instruction:

**Row 1** – ch3, 1dc, ch3, 1sc in 4th st, 4sc, ch3, 1dc in 4th st, [2dc, ch3, 1sc in 4th st, 4sc, ch3, 1dc in 4th st] x REPEAT, 1dc in following st

**Row 2** – ch3, [3dc in the 3-ch space bellow, ch3, 1sc in 2nd sc st bellow, 2sc in following sts, ch3, 3dc in the 3-ch space bellow, 1ch] x REPEAT, 3dc in the 3-ch space bellow, ch3, 1sc in 2nd sc st bellow, 2sc in following sts, ch3, 3dc in the 3-ch space bellow, 1dc in following st

**Row 3** – ch6, 3dc in the 3-ch space bellow, ch3, 1dc in 2nd sc st bellow, ch3, 3dc in the 3-ch space bellow, ch3, [1dc in the 1-ch space bellow, ch3, 3dc in the 3-ch space bellow, ch3, 1dc in 2nd sc st bellow, ch3, 3dc in the 3-ch space bellow, ch3] x REPEAT, 1dc in following st

**Row 4** – ch1, 1sc on 1st st, [1sc in the 3-ch space bellow, ch3, 3dc in the 3-ch space bellow, ch1, 3dc in the 3-ch space bellow, ch3, 1sc in the 3-ch space bellow, 1sc in following st] x REPEAT, 1sc in the 3-ch space bellow, ch3, 3dc in the 3-ch space bellow, ch1, 3dc in the 3-ch space bellow, ch3, 1sc in the 3-ch space bellow, 1sc in following st

**Row 5** – ch1, 2sc, 1sc in the 3-ch space bellow, ch3, 3dc in the 1-ch space bellow, ch3, 1sc in the 3-ch space bellow, 1sc in following st, [2sc, 1sc in the 3-ch space bellow, ch3, 3dc in the 1-ch space bellow, ch3, 1sc in the 3-ch bellow, 1sc in following st] x REPEAT, 1sc in following st

**Row 6** – ch1, 1sc, [1sc, ch3, 3dc in the 3-ch space bellow, ch1, 3dc in the 3-ch space bellow, ch3, 1sc in 2nd sc st bellow, 1sc in following st] x REPEAT, 1sc, ch3, 3dc in the 3-ch space bellow, ch1, 3dc in the 3-ch space bellow, ch3, 1sc in 2nd sc st bellow, 1sc in following st

**Row 7** – ch6, 3dc in the 3-ch space bellow, ch3, 1dc in the 1-ch space bellow, ch3, 3dc in the 3-ch space bellow, ch3, [1dc in 2nd sc st bellow, ch3, 3dc in the 3-ch space bellow, ch3, 1dc in the 1-ch space bellow, ch3, 3dc in the 3-ch space bellow, ch3] x REPEAT, 1dc in 2nd sc st bellow

**Row 8** – ch3, [3dc in the 3-ch space bellow, ch3, 1sc in the 3-ch space bellow, 1sc on following st, 1sc in the 3-ch space bellow, ch3, 3dc in the 3-ch space bellow, ch1] x REPEAT, 3dc in the 3-ch space bellow, ch3, 1sc in the 3-ch space bellow, 1sc in following st, 1sc in the 3-ch space bellow, ch3, 3dc in the 3-ch space bellow, 1dc in following st

From now on, work **Row 1** as follows – ch3, 1dc in 2° st, ch3, 1sc in the 3-ch space bellow, 3sc in following sts, 1sc in 3-ch space bellow, ch3, 1dc in 1-ch space bellow, [2dc in the same 1-ch space bellow, ch3, 1sc in the 3-ch space bellow, 3sc in following sts, 1sc in 3-ch space bellow, ch3, 1dc in 1-ch space bellow] x REPEAT, 1dc in following st



Colour 22

### BIO LOVE

(100% Organic cotton)

Rosal is one of those patters that bring together what we like the most in this season's clothes: the freshness and comfort of organic cotton, the lightness of an open floral crochet stitch and the delicate colour, essential in a summer wardrobe.