

# Rosários 4<sup>®</sup>

252

Autumn . Winter

Jardim Cardigan



DESIGN  
LUÍSA LÓ

JARDIM



55% Merino  
Superwash

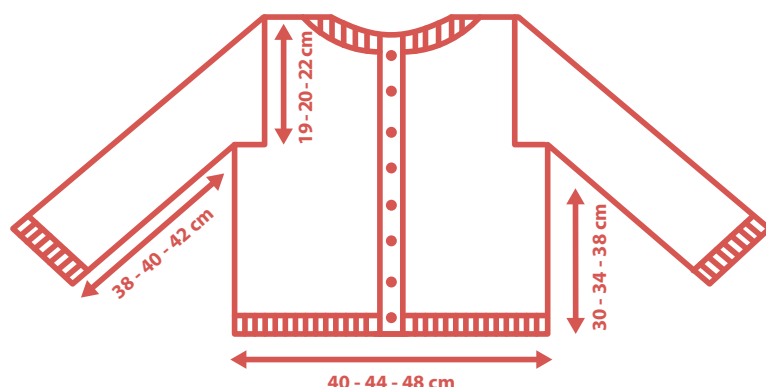


45% Cotton



100% Natural  
Fibres

# Jardim Cardigan



## YARN

2 balls of Rosários 4 Jardim yarn (50g/230m), colour 33 (blue).

1 ball of Rosários 4 Jardim yarn (50g/230m) in each of the following colours: 01 (cream), 47 (light pink), 03 (white), 53 (rusty brown), 35 (light blue), 37 (green), 51 (pink).

## NEEDLES

3 mm knitting needles.

## SIZES

S, M, L.

### Notes:

This cardigan is knitted front and back at the same time to the armhole measurement, then the work is divided so that the back is knitted separately from the fronts.

The chart is in multiples of 20 stitches and 64 rows, for the body as well as for the sleeves.

The chart must be read from right to left on the right side rows (knit) and from left to right on reserve rows (purl).

## INSTRUCTIONS

With colour 33 (blue) cast on 240 (260, 280) stitches.

Knit 6 cm of single ribbing (K1, P1).

Begin the body of the cardigan by following the chart from row 1 to row 64 and repeating the chart from row 1 until the body measures 30 cm (34 cm, 38 cm) from cast on.

### SEPARATING BACK AND FRONTS

With right side facing, and always following the chart, knit 56 (62, 68) stitches, cast off 8 (10, 10) stitches, knit 112 (120, 124) stitches, cast off 8 (10, 10) stitches, and knit the remaining 56 (62, 68) stitches.

### LEFT FRONT

Purl until the last 2 stitches, P2tog, and turn work. You should now have 55 (61, 67) stitches.

All the remaining stitches, for back and right front should remain on hold.

Follow the chart until front measures 10 (11, 12) cm from the armhole.

### NECK

On right side: cast off 10 stitches and knit to end of row. [45, 51, 57 stitches]

On wrong side: purl to last 2 stitches, P2tog.

On right side: K2tog, knit to end of row.

On wrong side: purl to last 2 stitches, P2tog.

On right side: K2tog, knit to end of rows.

On the following alternate rows, K2tog at the beginning of row until you are left with 25 (31, 39) stitches on the needle.

Continue straight until front measures 19 (20, 22) cm from the armhole.

Cast off all stitches.

### RIGHT FRONT

Join the yarn to right front and repeat the instructions given for the left front but reversing the sides of all the decreases.

### BACK

Join the yarn to the 112 (120, 124) stitches on hold for the back and continue following the chart until back measures 19 (20, 22) cm from the armhole.

Cast off all stitches.

### SLEEVES

Using colour 33 (blue) cast on 60 (70, 80) stitches.

Knit 6 cm of single ribbing (K1, P1).

Follow the chart for sleeves. Increase one stitch at each end of every 6th row. Note that you should try and incorporate these stitches into the chart as much as possible.

When you have 84 (88, 92) stitches on the needles you should proceed with the following decreases:

Cast off 4 stitches at the beginning of the following 2 rows. You are left with 72 (80, 88) stitches.

Cast off 1 stitch at each end of the following 7 (7, 6) rows. You are left with 58 (66, 76) stitches.

Cast off 1 stitch at each end every 3 rows until you are left with 44 (52, 62) stitches.

Cast off 1 stitch at each end of every row until you are left with 30 (38, 42) stitches.

Cast off all stitches.

### FINISHING

Sew back shoulders with front shoulders.

### Right front band

With right side facing and beginning at the bottom edge, pick up and knit 110 (116, 122) stitches and knit 4 cm of single ribbing (K1, P1). Cast off loosely.

### Left front band

With right side facing and beginning at the neck edge, pick up and knit 110 (116, 122) stitches and knit 2 cm of single ribbing (K1, P1). On the following row define where and how many button holes you wish and knit them by knitting 2 stitches together followed by a yarn over. Knit 2 cm of single ribbing and cast off loosely.

### Neck band

With right side facing pick up and knit 140 (144, 150) stitches along the neck and knit 2 cm of single ribbing. Make one buttonhole on the same side as the other buttonholes of the front band. Knit 2 cm of single ribbing and cast off loosely.

Sew sleeve onto armholes. Sew sleeve seams. Apply buttons.



PURE NEW WOOL



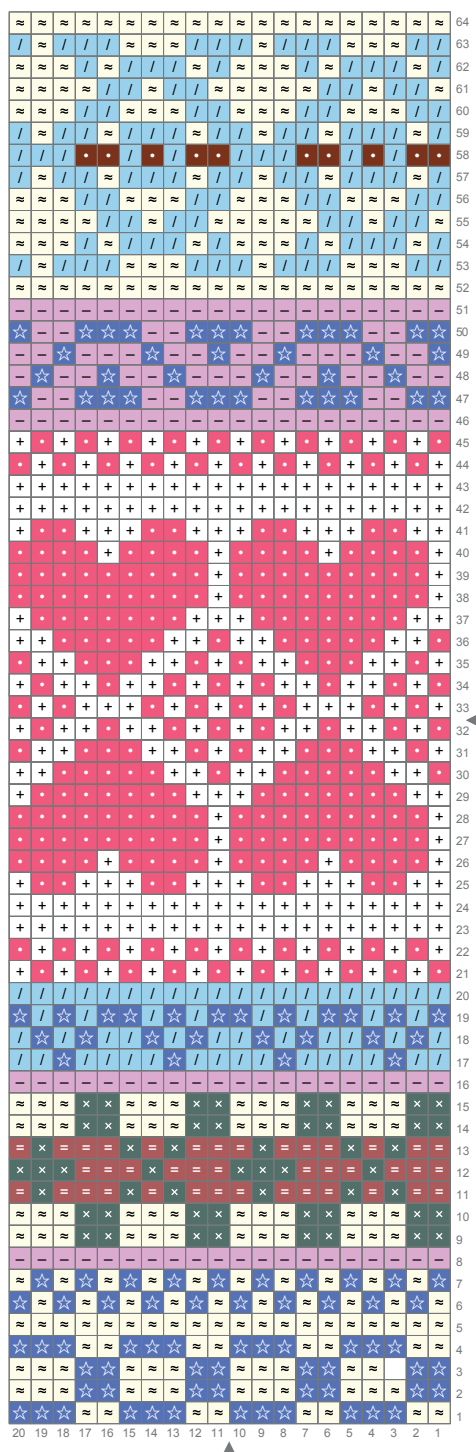
40 ANOS

# 252

Autumn . Winter

## Body

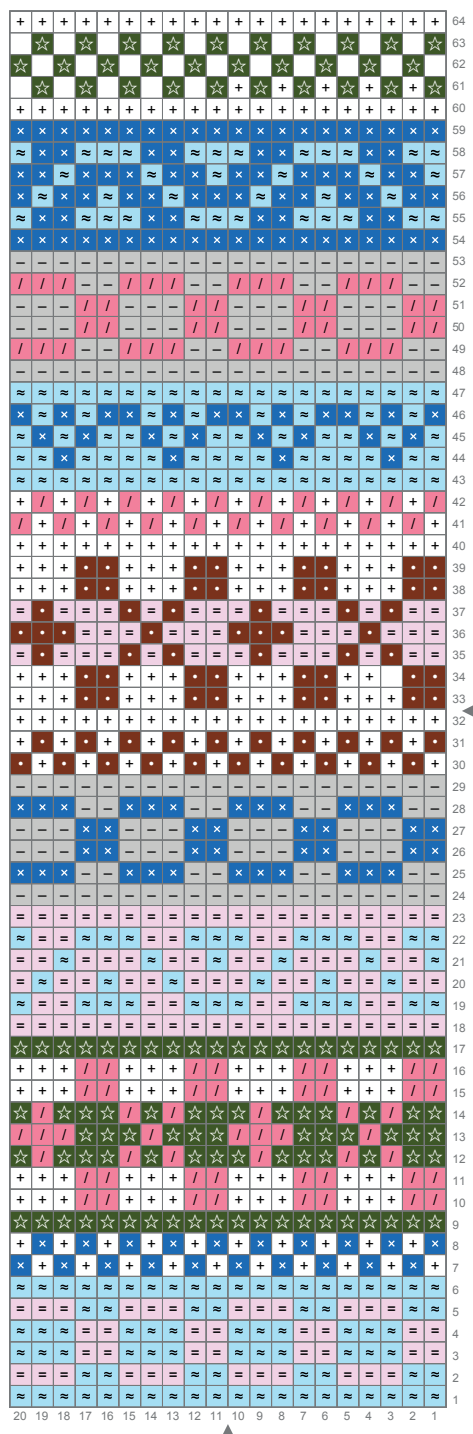
Finished size: 20 x 64 cm



- + colour: 01
- colour: 47
- = colour: 53
- / colour: 35
- x colour: 37
- ~ colour: 03
- ☆ colour: 33
- colour: 53
- colour: 51

## Sleeve

Finished size: 20 x 64 cm



- + colour: 01
- colour: 03
- = colour: 47
- / colour: 51
- x colour: 33
- ~ colour: 35
- ☆ colour: 37
- colour: 53



40 ANOS

Rua das Grúas, 13 - Apartado 123 2485-059 Mira de Aire - Portugal  
Tel. +351 244 447 300 Fax +351 244 447 309  
info@rosarios4.com www.rosarios4.com

## JARDIM

(45% Cotton, 55% Merino Superwash Wool)

A cotton and wool blend that we can knit and wear all year long. The colours fit perfectly with jacquard patterns, making it the perfect yarn for this cardigan.



Colour 49