

Rosários 4[®]

253

Autumn . Winter

Jacquard Sleeveless Jumper



DESIGN
LUÍSA LÓ

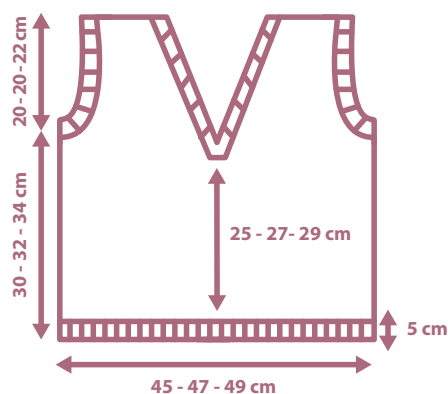
MEIA



70% Lã
Merino

30%
Poliamida

Jacquard Sleeveless Jumper



YARN

The yarn used is Meia by Rosários4 (50g/185) and the required amount is 1 ball in each of the following colours: 10 (dark grey) - 23 (pale pink) - 05 (white) - 25 (rusty red) - 03 (yellow) - 18 (pale green).

NEEDLES

Circular needles size 3mm.

SIZES

S, M, L.

NOTIONS

1 stitch marker.

Notes:

The body of this sleeveless jumper is knitted in the round, always in knit stitch, until the separation of front from back, at which time you will have to knit back and forth (knit on the front, purl on the back).

INSTRUCTIONS

With colour 10, dark grey, cast on 288 (312, 336) stitches using your preferred method of cast on.

Join for circular knitting placing a marker at the beginning and making sure that the stitches on the needles are not twisted.

Knit 5 cm of double ribbing: K2, P2.

From hereon you must follow the chart, bearing in mind the following important notes:

All rows are knitted in knit stitch.

The marker is used to mark the beginning of a row.

The chart is set out in multiples of 24 stitches with 64 rows.

Follow the chart from right to left beginning at row 1.

Knit from row 1 to 64 and then from start from row 1 again until the body measures 30 cm (32 cm, 34 cm) from cast on.

SEPARATING THE FRONT FROM THE BACK

Always following the chart pattern, knit the following row:

Cast off 6 stitches at the beginning; knit the following 132 (144, 156) stitches; cast off the following 12 stitches; knit the following 132 (144, 156) stitches; cast off 6 stitches.

Place the next 132 (144, 156) stitches, for the front, on a stitch holder or a piece of scrap yarn.

BACK

From hereon you will knit the back by continuing to follow the chart but having in mind that you are no longer knitting in the round and therefore you must knit and purl back and forth.

ARMHOLES

SSK at the beginning and K2TOG at the end of the next 6 right side facing rows.

You are left with 120 (132, 144) stitches on the needle.

Continue knitting and purling back and forth until the back measures 20 cm (20 cm, 22 cm) from the beginning of the armholes. Please note that when you reach the 64th row on the chart then start again from row 1.

Cast off all stitches.

FRONT

Join the yarn to the 132 (144, 156) stitches left on hold and, always keeping to the chart, knit 65 (71, 77) stitches, K2tog, turn the work and purl all stitches. Leave the remaining stitches on hold as the left and right sides of the neck are knitted separately.

SSK at the beginning of the following 6 right side facing rows (armhole) and AT THE SAME TIME K2tog on the last 2 stitches (v-neck) until you have 36 (40, 44) stitches on the needle.

When the front measures 20 cm (20 cm, 22 cm) from the beginning of the armhole, cast off all stitches.

Join the yarn to the stitches on hold, and with right side facing SSK at the beginning (for v-neck) and AT THE SAME TIME K2tog on the last 2 stitches (armhole). Repeat for the following on the next 6 right sided rows and therefore matching the other side. When armhole measures 20 cm (20 cm, 22 cm) cast off the 36 (40, 44) stitches you have on the needle.

FINISHING

Sew both shoulder seams.

With the circular needles, right side facing, and with the dark grey yarn, pick up and knit 66 (66, 74) stitches along the armhole. Knit 3 cm of double ribbing (K2, P2) and cast off loosely. Repeat this for the other armhole.

For the neck pick up and knit approximately 170 (189, 190) stitches. Knit 3 cm of double ribbing (K2, P2) and cast off loosely.

ABBREVIATIONS

K: knit

P: purl

K2tog: knit 2 stitches together

SSK: slip, slip, knit.



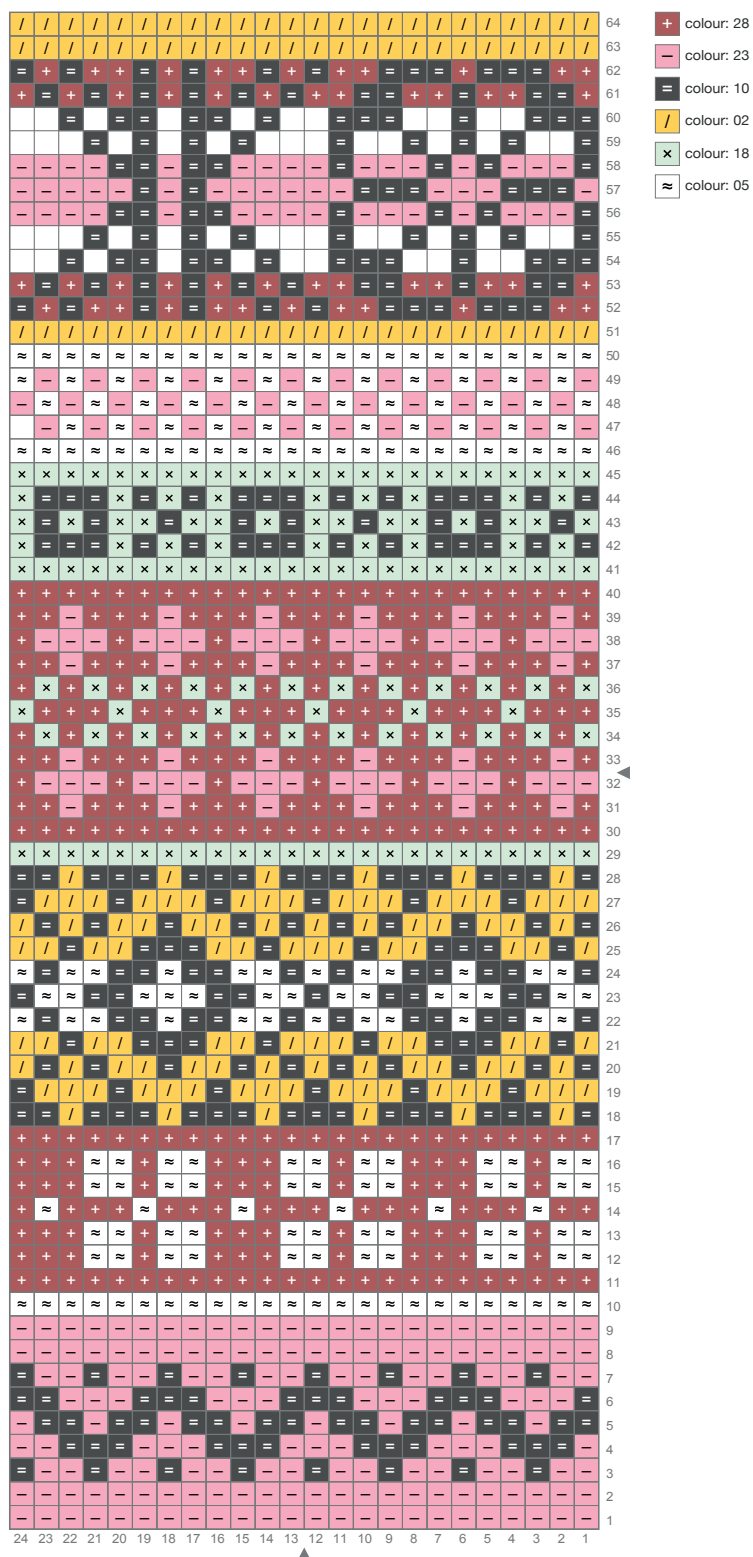
40
ANOS

253

Autumn . Winter

Chart

Finished size: 24 x 64 cm



MEIA

(70% Merino wool, 30% polyamide)

A colourful pattern and such an exciting knitting project! Meia is a comfortable, soft yarn, making this sleeveless jumper an option for almost all seasons.



Colour 28

Rua das Grutas, 13 - Apartado 123 2485-059 Mira de Aire - Portugal
Tel. +351 244 447 300 Fax +351 244 447 309
info@rosarios4.com www.rosarios4.com



40
ANOS