

Rosários 4.®

245

Kids Collection

Snail Tunic



DESIGN
LUÍSA LÓ

BENJAMIM



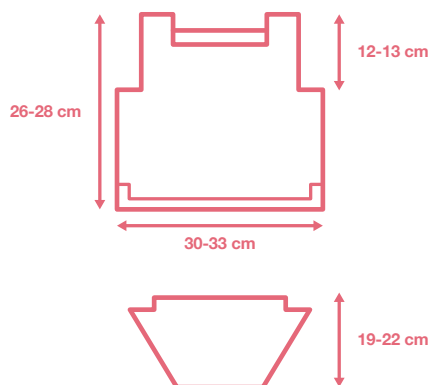
50% Acrílico
Microfibra

50% Microfibre
Acrylic

50%
Poliamida

50%
Polyamide

Snail Tunic



YARN

2 balls Benjamim Rosários 4 colour 27.
1 ball Benjamim Rosários 4 colour 11.

NEEDLES

Knitting needles 4 mm.

NOTIONS

2 stitch markers, 4 buttons.

SIZES

6-12 (12-18) months.

STITCHES

Garner and stockinette stitches.

INSTRUCTIONS

Suggestion: the snail design (16 sts by 14 rows) can be repeated anywhere in the tunic.

BACK

Waistband

Cast on 71 (77) sts.

Knit 6 rows.

Body

Row 1: knit all sts.

Row 2: K4, P until the last 4 sts, K4.

Repeat rows 1 and 2, 4 more times.

Continue in stockinette stitch until back measures 18 (19) cm from the beginning.

Armholes

Bind off the 4 sts at the beginning of the next two rows. Continue straight until back measures 25 (26) cm from the beginning.

Neckline

Row 1 (WS): P16 (18), K31 (33), P16 (18).

Row 2 (RS): K all sts.

Repeat rows 1 and 2 once.

WS: P16 (18), K4, bind off 23 (25) sts, K4, P16 (18).

From here on, knit shoulders separately.

Start only on this last shoulder:

Row 1: K20 (22).

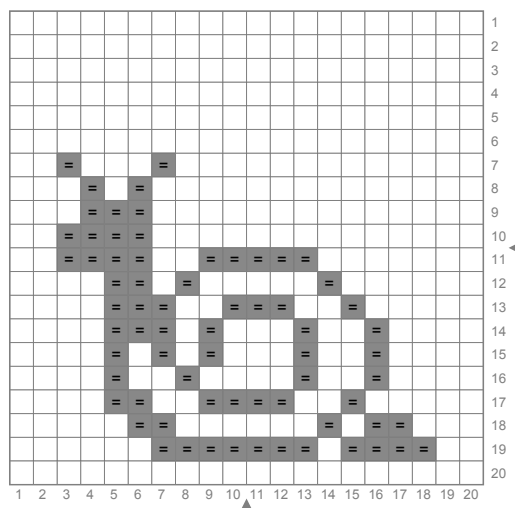
Row 2: K4, P16 (18).

Row 3: K20 (22).

Repeat the last 2 rows (2 and 3) twice.

Knit 4 rows and bind off all sts.

Chart



Join the yarn to the other shoulder and by the RS, knit 1 row.

Row 1: P16 (18), K4.

Row 2: knit all sts.

Repeat rows 1 and 2, twice.

Work 4 rows in K and bind off all sts.

FRONT

Waistband

Cast on 71 (77) sts.

Knit 6 rows.

Body

Row 1: knit all sts.

Row 2: K4, P until last 4 sts, K4.

Repeat rows 1 and 2, 4 more times.

On RS, work 4 sts, place marker, work 16 sts, place marker and knit remaining 51 (57) sts. These markers serve to indicate the start and end of the design.

Purl 1 row (WS) and begin the design following the chart. Having terminated the 14 rows of the design, continue in stockinette stitch until back measures 18 (19) cm from the beginning.

Armholes

Bind off 4 sts at the beginning of the next two rows.

Continue straight until back measures 22 (23) cm from the beginning.

Neckline

Row 1 (WS): P16 (18), K31 (33), P16 (18).

Row 2 (RS): knit all sts.

Repeat row 1 and 2 once.

WS: P16 (18), K4, bind off 23 (25) sts, K4, P16 (18).

From here on, knit shoulders separately.

Start only on this last shoulder:

Row 1: K20 (22).

Row 2: K4, P16 (18).

Row 3: K20 (22).

Repeat the last 2 rows (2 and 3) 5 more times.

Buttonholes

Knit 1 row.

RS: K6 (7), yo, K2tog, K8 (9), yo, K2tog, K2.

Knit 2 rows.

Bind off all sts.

Join yarn to the other shoulder and by RS, K 1 row.

Row 1: P16 (18), K4.

Row 2: knit all sts.

Repeat rows 1 and 2, 5 more times.



PURE NEW WOOL



40 YEARS

40
YEARS

Rua das Grutas, 13 - Apartado 123 2485-059 Mira de Aire - Portugal
Tel. +351 244 447 300 Fax +351 244 447 309
info@rosarios4.com www.rosarios4.com

Buttonholes

Knit 1 row.

RS: K2, K2tog, yo, K8 (9), K2tog, yo, K6 (7).

Knit 2 rows.

Bind off all sts.

SLEEVES

Cast on 34 (36) sts.

Knit 6 rows.

Work 2 rows in stockinette stitch.

Increase row: K1, incr 1, K until last stitch, incr 1, K1. Work 3 rows. Repeat these last 4 rows (1 incr row and 3 without incr) 9 (10) more times. Should have 54 (58) sts. Continue without increases until sleeve measures 19 (22) cm. Bind off 4 sts at the beginning of the next 2 rows and bind off all sts.

Work the other sleeve in the same way.

FINISHING

Overlap the back shoulders onto the front shoulders and sew only the joints. Sew sleeve caps to armholes, the side seams of sleeves and then the body.

Apply 2 buttons for each shoulder.

ABBREVIATIONS

K: knit

P: purl

st/sts: stitch/stitches

RS: right side

WS: wrong side

yo: yarn over

incr: increase

**BENJAMIM**

(50% Microfibre Acrylic, 50% Polyamide)

Benjamin is part of Rosários 4 Kids Collection. It's an incredibly soft yarn, so comfortable that is already one of Rosários 4 favourites for baby clothes.