

# Rosários 4<sup>®</sup>

234

Autumn . Winter

Meu Bem tunic

MEU BEM



62% Wool



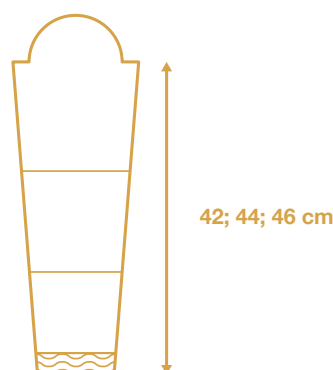
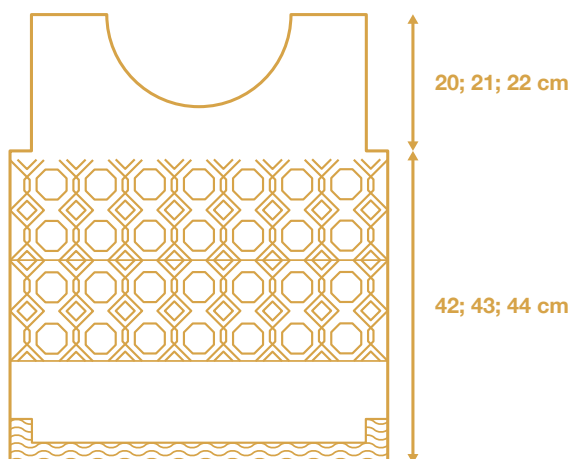
15% Alpaca

23%  
Polyamide

DESIGN:  
LUIZA LÓ



# Meu Bem tunic



## YARN

3 balls of Rosários 4 Meu Bem yarn, colour 09 (colour A).  
2 balls of Rosários 4 Meu Bem yarn, colour 08 (colour B).  
3 balls of Rosários 4 Meu Bem yarn, colour 07 (colour C).

## NEEDLES

Knitting needles 4 mm.

## SIZE

S, M, L.

## INSTRUCTIONS

### BACK

Cast on 100 (120, 140) sts in colour A. Work 8 rows in garter st (knit all rows). Work 20 rows in stockinette stitch (RS: knit; WS: purl), being that the first 6 and the last 6 stitches are always in knit. Work only in stockinette stitch, until back measures 22 (23, 24) cm from the start.

Work 28 rows of the chart using colour A (as colour in chart) and colour B (as background colour), repeat 20 sts of the drawing 5 (6, 7) times.

Work another 28 rows of the chart using colour A (as colour in chart) and colour C (as background colour), repeat 20 sts of the chart 5 (6, 7) times.

### ARMHOLES

Work 3 rows in stockinette stitch only in colour C. Bind off 4 sts at the beginning of the next 2 rows and continue straight until armholes measure 20 (21, 22) cm.

Bind off the 92 (112, 132) sts.

### FRONT

Repeat the instructions of the back up to the armholes. When the armholes measure 16 cm, proceed to the neckline.

## NECKLINE

Bind off the 20 (24, 28) centre sts, knit each side separately, make the following decreases every 2nd row and only on the side of the neckline:

### SIZE S

4 sts 1 time;  
3 sts 1 time;  
2 sts 3 times;  
1 st 1 time.

Bind off the 22 sts on the needle. Join the yarn to the sts for the other shoulder and repeat the decreases.

### SIZE M

5 sts 1 time;  
4 sts 1 time;  
2 sts 4 times;  
1 st 1 time.

Bind off 26 sts on the needle. Join the yarn to the sts for the other shoulder and repeat the decreases.

### SIZE L

4 sts 1 time;  
3 sts 1 time;  
2 sts 4 times;  
1 st 1 time.

Bind off the 30 sts on the needle. Join the yarn to the sts for the other shoulder and repeat the decreases.



PURE NEW WOOL



40 ANOS



# 234

Autumn . Winter



PURE NEW WOOL



ISO 9001

40  
ANOS

Rua das Grutas, 13 - Apartado 123 - 2485-059 Mira de Aire - Portugal  
Tel: +351 244 447 300 - Fax: +351 244 447 309  
info@rosarios4.com www.rosarios4.com

## SLEEVES

Cast on 40 (44, 48) sts using colour A. Work 8 rows in garter st (knit all rows).

The sleeves are in stockinette stitch, thus 18 (20, 22) cm are in colour A, 10 cm in colour B and the upper part of the sleeve in colour C. Increase 1 st at the beginning and another st at the end of every 8th row until you have 66 (74, 82) sts on needle.

When sleeve measures 42 (44, 46) cm (approximately), proceed to the following decreases for the armhole and the head of the sleeve:

Bind off 4 sts at the beginning of the next 2 rows.

Bind off 2 sts at the beginning of all following rows until having 14 (16, 18) sts on the needle. Bind off all sts.

## FINISHING

### Neckline

Sew shoulders using colour C, pick up approximately 84 (94, 104) sts along the entire neckline. Work 6 rows in garter st (knit all rows) and bind off all sts.

Sew sleeves and side seams.



Colour 01

## MEU BEM

(62% Wool, 23% Polyamide, 15% Alpaca)

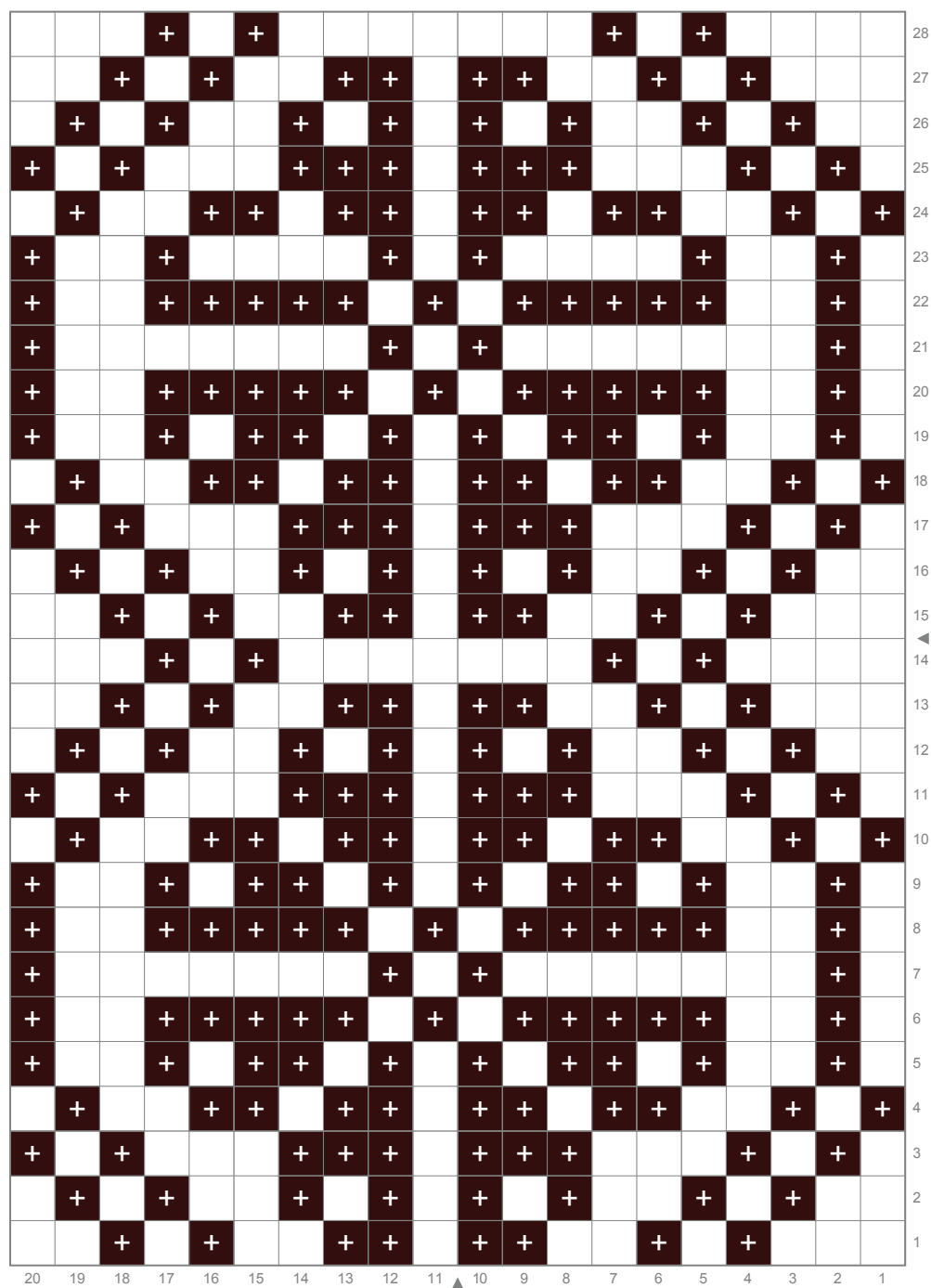
Extremely comfortable and so easy to wear. The design of the tunic brings to mind the Portuguese tiles, and the combination of the brown tones makes it the perfect piece for autumn days.

234



40  
ANOS

Rua das Grutas, 13 - Apartado 123 2485-059 Mira de Aire - Portugal  
Tel. +351 244 447 300 Fax +351 244 447 309  
info@rosarios4.com www.rosarios4.com



**+** colour: 09